



新潮的产品背后都有特立独行的设计师，
 在无序中追求有序，在有序里寻找创新，
 营造出和谐而丰富的层次感，
 将极简与克制的空间美感表现得淋漓尽致。

Behind the trendy products are maverick designers.
 Pursue order in disorder, seek innovation in order,
 Create a harmonious and rich sense of hierarchy,
 The minimalist and restrained space aesthetics are vividly displayed.

01 PULL BASKET TYPE

拉篮类/01-34

02 HARDWARE

功能五金类/35-40

03 HARDWARE

定制收纳类/41-50

04 FRAME CABINET TYPE

定制收纳类/51-55

05 FRAME CABINET TYPE

套格柜体类/51-56

06 ACCESSORIES

配件类/57-58

07 HANGER

衣杆类/63-72

08 LEATHER DOOR

高定衣橱皮革门/75

09 CABINET DOOR SLIDING TYPE

柜门抽面类/76

10 CUPBOARD DOOR HANDLE

柜门拉手类/77-78

11 LEATHER DOOR HANDLE

高定衣橱皮革长拉手/79-80

12 COLOR CARD

色卡/81-82



Trondheim Series Pull Basket 特隆赫姆系列拉篮



特隆赫姆系列--单铝框 (铝框前方贴皮革)
Trondheim Series--Single Aluminum Frame (Leather Is
Pasted In Front Of Aluminum Frame)

产品型号 Item No.	基材 Material	常规尺寸 Size
TL-1-06	铝合金 Aluminum Alloy	564×492×106mm
TL-1-07	铝合金 Aluminum Alloy	664×492×106mm
TL-1-08	铝合金 Aluminum Alloy	764×492×106mm
TL-1-09	铝合金 Aluminum Alloy	864×492×106mm
TL-1-10	铝合金 Aluminum Alloy	964×492×106mm

颜色: 欧洲灰 Color: European Grey



玻璃平篮 GLASS FLAT BASKET

产品型号 Item No.	基材 Material	尺寸 Size (w×d×h)
TL-5-06	铝合金 Aluminum Alloy	564 x 492 x 106 mm
TL-5-07		664 x 492 x 106 mm
TL-5-08		764 x 492 x 106 mm
TL-5-09		864 x 492 x 106 mm
TL-5-10		964 x 492 x 106 mm



平篮 FLAT BASKET

产品型号 Item No.	基材 Material	尺寸 Size (w×d×h)
TL-6-06	铝合金 Aluminum Alloy	564 x 492 x 106 mm
TL-6-07		664 x 492 x 106 mm
TL-6-08		764 x 492 x 106 mm
TL-6-09		864 x 492 x 106 mm
TL-6-10		964 x 492 x 106 mm



饰品盒 JEWELRY BOX

产品型号 Item No.	基材 Material	尺寸 Size (w×d×h)
TL-7-06	铝合金 Aluminum Alloy	564 x 492 x 106 mm
TL-7-07		664 x 492 x 106 mm
TL-7-08		764 x 492 x 106 mm
TL-7-09		864 x 492 x 106 mm
TL-7-10		964 x 492 x 106 mm



活动裤架 (含收纳盒) MOVABLE TROUSER RACK (INCLUDING STORAGE BOX)

产品型号 Item No.	基材 Material	尺寸 Size (w×d×h)
TL-8-06	铝合金 Aluminum Alloy	564 x 492 x 106 mm
TL-8-07		664 x 492 x 106 mm
TL-8-08		764 x 492 x 106 mm
TL-8-09		864 x 492 x 106 mm
TL-8-10		964 x 492 x 106 mm



九宫格 DIVIDING BOX

产品型号 Item No.	基材 Material	尺寸 Size (w×d×h)
TL-9-06	铝合金 Aluminum Alloy	564 x 492 x 106 mm
TL-9-07		664 x 492 x 106 mm
TL-9-08		764 x 492 x 106 mm
TL-9-09		864 x 492 x 106 mm
TL-9-10		964 x 492 x 106 mm



百宝格 DIVIDING BOX

产品型号 Item No.	基材 Material	尺寸 Size (w×d×h)
TL-10-06	铝合金 Aluminum Alloy	564 x 492 x 106 mm
TL-10-07		664 x 492 x 106 mm
TL-10-08		764 x 492 x 106 mm
TL-10-09		864 x 492 x 106 mm
TL-10-10		964 x 492 x 106 mm



多功能收纳盒1 MULTIFUNCTIONAL STORAGE BOX 1

产品型号 Item No.	基材 Material	尺寸 Size (w×d×h)
TL-11-06	铝合金 Aluminum Alloy	564 x 492 x 106 mm
TL-11-07		664 x 492 x 106 mm
TL-11-08		764 x 492 x 106 mm
TL-11-09		864 x 492 x 106 mm
TL-11-10		964 x 492 x 106 mm



多功能收纳盒2 MULTIFUNCTIONAL STORAGE BOX 2

产品型号 Item No.	基材 Material	尺寸 Size (w×d×h)
TL-12-06	铝合金 Aluminum Alloy	564 x 492 x 106 mm
TL-12-07		664 x 492 x 106 mm
TL-12-08		764 x 492 x 106 mm
TL-12-09		864 x 492 x 106 mm
TL-12-10		964 x 492 x 106 mm



内衣篮 UNDERWEAR BASKET

产品型号 Item No.	基材 Material	尺寸 Size (w×d×h)
TL-13-06	铝合金 Aluminum Alloy	564 x 492 x 185 mm
TL-13-07		664 x 492 x 185 mm
TL-13-08		764 x 492 x 185 mm
TL-13-09		864 x 492 x 185 mm
TL-13-10		964 x 492 x 185 mm



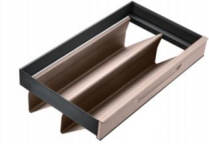
皮篮 LEATHER BASKET

产品型号 Item No.	基材 Material	尺寸 Size (w×d×h)
TL-14-06	铝合金 Aluminum Alloy	564 x 492 x 265 mm
TL-14-07		664 x 492 x 265 mm
TL-14-08		764 x 492 x 265 mm
TL-14-09		864 x 492 x 265 mm
TL-14-10		964 x 492 x 265 mm



首饰盒 JEWELRY BOX

产品型号 Item No.	基材 Material	尺寸 Size (w×d×h)
TL-15-06	铝合金 Aluminum Alloy	564 x 492 x 106 mm
TL-15-07		664 x 492 x 106 mm
TL-15-08		764 x 492 x 106 mm
TL-15-09		864 x 492 x 106 mm
TL-15-10		964 x 492 x 106 mm



鞋架 SHOE RACK

产品型号 Item No.	基材 Material	尺寸 Size (w×d×h)
TL-16-06	铝合金 Aluminum Alloy	564 x 492 x 265 mm
TL-16-07		664 x 492 x 265 mm
TL-16-08		764 x 492 x 265 mm
TL-16-09		864 x 492 x 265 mm
TL-16-10		964 x 492 x 265 mm



TRONDHEIM GLASS MINIMALIST STORAGE

特隆赫姆玻璃系列-简约收纳设计

* 常规待选颜色:

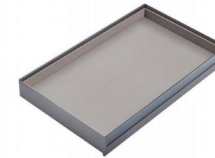


颜色型号: BZ-15
Color NO: BZ-15

颜色型号: BZ-17
Color NO: BZ-17

颜色型号: B-19
Color NO: B-19

TRONDHEIM GLASS 特隆赫姆玻璃系列



平篮 FLAT BASKET

产品型号 Item No.	基材 Material	尺寸 Size (w×d×h)
TLB-6-06	铝合金 Aluminum Alloy	564 x 486 x 106 mm
TLB-6-07		664 x 486 x 106 mm
TLB-6-08		764 x 486 x 106 mm
TLB-6-09		864 x 486 x 106 mm
TLB-6-10		964 x 486 x 106 mm



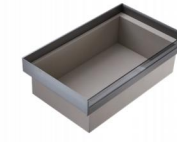
活动裤架 MOVEABLE TROUSERS RACK

产品型号 Item No.	基材 Material	尺寸 Size (w×d×h)
TLB-8-06	铝合金 Aluminum Alloy	564 x 486 x 106 mm
TLB-8-07		664 x 486 x 106 mm
TLB-8-08		764 x 486 x 106 mm
TLB-8-09		864 x 486 x 106 mm
TLB-8-10		964 x 486 x 106 mm



百宝格 DIVIDING BOX

产品型号 Item No.	基材 Material	尺寸 Size (w×d×h)
TLB-10-06	铝合金 Aluminum Alloy	564 x 486 x 106 mm
TLB-10-07		664 x 486 x 106 mm
TLB-10-08		764 x 486 x 106 mm
TLB-10-09		864 x 486 x 106 mm
TLB-10-10		964 x 486 x 106 mm



皮篮 LEATHER BASKET

产品型号 Item No.	基材 Material	尺寸 Size (w×d×h)
TLB-14-06	铝合金 Aluminum Alloy	564 x 486 x 265 mm
TLB-14-07		664 x 486 x 265 mm
TLB-14-08		764 x 486 x 265 mm
TLB-14-09		864 x 486 x 265 mm
TLB-14-10		964 x 486 x 265 mm

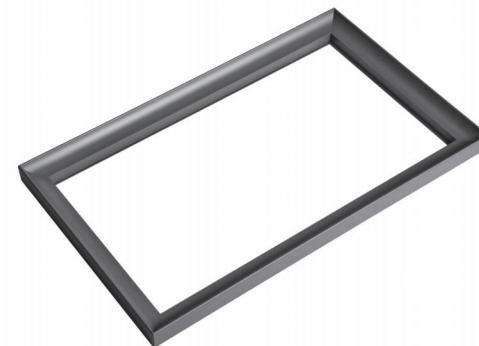


首饰盒 JEWELRY BOX

产品型号 Item No.	基材 Material	尺寸 Size (w×d×h)
TLB-15-06	铝合金 Aluminum Alloy	564 x 486 x 106 mm
TLB-15-07		664 x 486 x 106 mm
TLB-15-08		764 x 486 x 106 mm
TLB-15-09		864 x 486 x 106 mm
TLB-15-10		964 x 486 x 106 mm



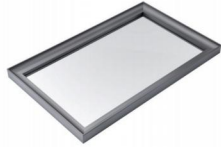
Steven A Series Leather Pull Basket 史蒂文-A系列皮革拉篮



单铝框 (四边框)
SINGLE ALUMINUM FRAME
(FOUR BORDER)

产品型号 Item No.	基材 Material	常规尺寸 Size
A-1-06	铝合金 Aluminum Alloy	564×466×50mm
A-1-07	铝合金 Aluminum Alloy	664×466×50mm
A-1-08	铝合金 Aluminum Alloy	764×466×50mm
A-1-09	铝合金 Aluminum Alloy	864×466×50mm
A-1-10	铝合金 Aluminum Alloy	964×466×50mm

颜色: 欧洲灰 备注: 进口海蒂诗轨道另配
Color: European Grey Note: Imported Hettich track is separately equipped



玻璃平篮 GLASS FLAT

产品型号 Item No.	基材 Material	尺寸 Size (w*d*H)
A-7-06	铝合金 Aluminum Alloy	564 x 466 x 50 mm
A-7-07		664 x 466 x 50 mm
A-7-08		764 x 466 x 50 mm
A-7-09		864 x 466 x 50 mm
A-7-10		964 x 466 x 50 mm



活动裤架 MOVEABLE TROUSERS RACK

产品型号 Item No.	基材 Material	尺寸 Size (w*d*H)
A-8-06	铝合金 Aluminum Alloy	564 x 466 x 50 mm
A-8-07		664 x 466 x 50 mm
A-8-08		764 x 466 x 50 mm
A-8-09		864 x 466 x 50 mm
A-8-10		964 x 466 x 50 mm



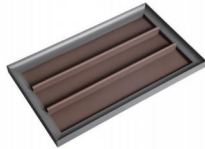
圆杆裤架 ROUND POLE TROUSERS RACK

产品型号 Item No.	基材 Material	尺寸 Size (w*d*H)
A-9-06	铝合金 Aluminum Alloy	564 x 466 x 50 mm
A-9-07		664 x 466 x 50 mm
A-9-08		764 x 466 x 50 mm
A-9-09		864 x 466 x 50 mm
A-9-10		964 x 466 x 50 mm



百宝格 DIVIDING BOX

产品型号 Item No.	基材 Material	尺寸 Size (w*d*H)
A-10-06	铝合金 Aluminum Alloy	564 x 466 x 50 mm
A-10-07		664 x 466 x 50 mm
A-10-08		764 x 466 x 50 mm
A-10-09		864 x 466 x 50 mm
A-10-10		964 x 466 x 50 mm



分格篮 DIVIDER BASKET

产品型号 Item No.	基材 Material	尺寸 Size (w*d*H)
A-11-06	铝合金 Aluminum Alloy	564 x 466 x 50 mm
A-11-07		664 x 466 x 50 mm
A-11-08		764 x 466 x 50 mm
A-11-09		864 x 466 x 50 mm
A-11-10		964 x 466 x 50 mm



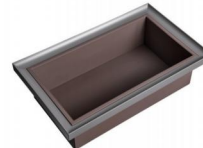
饰品盒 JEWELRY BOX

产品型号 Item No.	基材 Material	尺寸 Size (w*d*H)
A-12-06	铝合金 Aluminum Alloy	564 x 466 x 50 mm
A-12-07		664 x 466 x 50 mm
A-12-08		764 x 466 x 50 mm
A-12-09		864 x 466 x 50 mm
A-12-10		964 x 466 x 50 mm



内衣篮 UNDERWEAR BASKET

产品型号 Item No.	基材 Material	尺寸 Size (w*d*H)
A-13-06	铝合金 Aluminum Alloy	564 x 466 x 100 mm
A-13-07		664 x 466 x 100 mm
A-13-08		764 x 466 x 100 mm
A-13-09		864 x 466 x 100 mm
A-13-10		964 x 466 x 100 mm



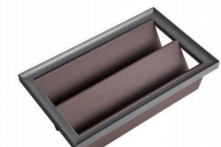
皮篮 LEATHER BASKET

产品型号 Item No.	基材 Material	尺寸 Size (w*d*H)
A-14-06	铝合金 Aluminum Alloy	564 x 466 x 200 mm
A-14-07		664 x 466 x 200 mm
A-14-08		764 x 466 x 200 mm
A-14-09		864 x 466 x 200 mm
A-14-10		964 x 466 x 200 mm



经典首饰盒 CLASSIC JEWELRY BOX

产品型号 Item No.	基材 Material	尺寸 Size (w*d*H)
A-15-06	铝合金 Aluminum Alloy	564 x 466 x 50 mm
A-15-07		664 x 466 x 50 mm
A-15-08		764 x 466 x 50 mm
A-15-09		864 x 466 x 50 mm
A-15-10		964 x 466 x 50 mm



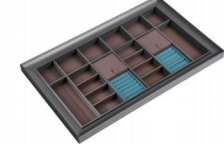
鞋架 SHOE RACK

产品型号 Item No.	基材 Material	尺寸 Size (w*d*H)
A-16-06	铝合金 Aluminum Alloy	564 x 466 x 265 mm
A-16-07		664 x 466 x 265 mm
A-16-08		764 x 466 x 265 mm
A-16-09		864 x 466 x 265 mm
A-16-10		964 x 466 x 265 mm



平篮 FLAT BASKET

产品型号 Item No.	基材 Material	尺寸 Size (w*d*H)
A-19-06	铝合金 Aluminum Alloy	564 x 466 x 50 mm
A-19-07		664 x 466 x 50 mm
A-19-08		764 x 466 x 50 mm
A-19-09		864 x 466 x 50 mm
A-19-10		964 x 466 x 50 mm



首饰盒 JEWELRY BOX

产品型号 Item No.	基材 Material	尺寸 Size (w*d*H)
A-20-06	铝合金 Aluminum Alloy	564 x 466 x 50 mm
A-20-07		664 x 466 x 50 mm
A-20-08		764 x 466 x 50 mm
A-20-09		864 x 466 x 50 mm
A-20-10		964 x 466 x 50 mm



污衣篮 LAUNDRY BASKET

产品型号 Item No.	基材 Material	尺寸 Size (w*d*H)
A-21-06	铝合金 Aluminum Alloy	564 x 466 x 530 mm
A-21-07		664 x 466 x 530 mm
A-21-08		764 x 466 x 530 mm
A-21-09		864 x 466 x 530 mm
A-21-10		964 x 466 x 530 mm





Steven B Series Leather Pull Basket 史蒂文-B系列皮革拉篮



单铝框 (前方贴条用铝)
Aluminum is used for pasting strips in
front of a single aluminum frame

产品型号 Item No.	基材 Material	常规尺寸 Size
BY-1-06	铝合金 Aluminum Alloy	564×476×50mm
BY-1-07	铝合金 Aluminum Alloy	664×476×50mm
BY-1-08	铝合金 Aluminum Alloy	764×476×50mm
BY-1-09	铝合金 Aluminum Alloy	864×476×50mm
BY-1-10	铝合金 Aluminum Alloy	964×476×50mm

颜色: 欧洲灰 备注: 进口海蒂诗轨道另配
Color: European Grey Note: Imported Hettich track is separately equipped



玻璃平篮 GLASS FLAT

产品型号 Item No.	基材 Material	尺寸 Size (w*d*H)
BY-7-06	铝合金 Aluminum Alloy	564 x 476 x 50 mm
BY-7-07		664 x 476 x 50 mm
BY-7-08		764 x 476 x 50 mm
BY-7-09		864 x 476 x 50 mm
BY-7-10		964 x 476 x 50 mm



活动裤架 MOVEABLE TROUSERS RACK

产品型号 Item No.	基材 Material	尺寸 Size (w*d*H)
BY-8-06	铝合金 Aluminum Alloy	564 x 476 x 50 mm
BY-8-07		664 x 476 x 50 mm
BY-8-08		764 x 476 x 50 mm
BY-8-09		864 x 476 x 50 mm
BY-8-10		964 x 476 x 50 mm



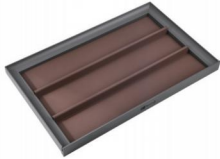
圆杆裤架 ROUND POLE TROUSERS RACK

产品型号 Item No.	基材 Material	尺寸 Size (w*d*H)
BY-9-06	铝合金 Aluminum Alloy	564 x 476 x 50 mm
BY-9-07		664 x 476 x 50 mm
BY-9-08		764 x 476 x 50 mm
BY-9-09		864 x 476 x 50 mm
BY-9-10		964 x 476 x 50 mm



百宝格 DIVIDING BOX

产品型号 Item No.	基材 Material	尺寸 Size (w*d*H)
BY-10-06	铝合金 Aluminum Alloy	564 x 476 x 50 mm
BY-10-07		664 x 476 x 50 mm
BY-10-08		764 x 476 x 50 mm
BY-10-09		864 x 476 x 50 mm
BY-10-10		964 x 476 x 50 mm



分格篮 DIVIDER BASKET

产品型号 Item No.	基材 Material	尺寸 Size (w*d*H)
BY-11-06	铝合金 Aluminum Alloy	564 x 476 x 50 mm
BY-11-07		664 x 476 x 50 mm
BY-11-08		764 x 476 x 50 mm
BY-11-09		864 x 476 x 50 mm
BY-11-10		964 x 476 x 50 mm



饰品盒 JEWELRY BOX

产品型号 Item No.	基材 Material	尺寸 Size (w*d*H)
BY-12-06	铝合金 Aluminum Alloy	564 x 476 x 50 mm
BY-12-07		664 x 476 x 50 mm
BY-12-08		764 x 476 x 50 mm
BY-12-09		864 x 476 x 50 mm
BY-12-10		964 x 476 x 50 mm



内衣篮 UNDERWEAR BASKET

产品型号 Item No.	基材 Material	尺寸 Size (w*d*H)
BY-13-06	铝合金 Aluminum Alloy	564 x 476 x 100 mm
BY-13-07		664 x 476 x 100 mm
BY-13-08		764 x 476 x 100 mm
BY-13-09		864 x 476 x 100 mm
BY-13-10		964 x 476 x 100 mm



皮篮 LEATHER BASKET

产品型号 Item No.	基材 Material	尺寸 Size (w*d*H)
BY-14-06	铝合金 Aluminum Alloy	564 x 476 x 200 mm
BY-14-07		664 x 476 x 200 mm
BY-14-08		764 x 476 x 200 mm
BY-14-09		864 x 476 x 200 mm
BY-14-10		964 x 476 x 200 mm



经典首饰盒 CLASSIC JEWELRY BOX

产品型号 Item No.	基材 Material	尺寸 Size (w*d*H)
BY-15-06	铝合金 Aluminum Alloy	564 x 476 x 50 mm
BY-15-07		664 x 476 x 50 mm
BY-15-08		764 x 476 x 50 mm
BY-15-09		864 x 476 x 50 mm
BY-15-10		964 x 476 x 50 mm



鞋架 SHOE RACK

产品型号 Item No.	基材 Material	尺寸 Size (w*d*H)
BY-16-06	铝合金 Aluminum Alloy	564 x 476 x 265 mm
BY-16-07		664 x 476 x 265 mm
BY-16-08		764 x 476 x 265 mm
BY-16-09		864 x 476 x 265 mm
BY-16-10		964 x 476 x 265 mm



平篮 FLAT BASKET

产品型号 Item No.	基材 Material	尺寸 Size (w*d*H)
BY-19-06	铝合金 Aluminum Alloy	564 x 476 x 50 mm
BY-19-07		664 x 476 x 50 mm
BY-19-08		764 x 476 x 50 mm
BY-19-09		864 x 476 x 50 mm
BY-19-10		964 x 476 x 50 mm



首饰盒 JEWELRY BOX

产品型号 Item No.	基材 Material	尺寸 Size (w*d*H)
BY-20-06	铝合金 Aluminum Alloy	564 x 476 x 50 mm
BY-20-07		664 x 476 x 50 mm
BY-20-08		764 x 476 x 50 mm
BY-20-09		864 x 476 x 50 mm
BY-20-10		964 x 476 x 50 mm



污衣篮 LAUNDRY BASKET

产品型号 Item No.	基材 Material	尺寸 Size (w*d*H)
BY-21-06	铝合金 Aluminum Alloy	564 x 476 x 550 mm
BY-21-07		664 x 476 x 550 mm
BY-21-08		764 x 476 x 550 mm
BY-21-09		864 x 476 x 550 mm
BY-21-10		964 x 476 x 550 mm





Steven C Series Leather Pull Basket 史蒂文-C系列皮革拉篮



单铝框 (铝框前方贴皮革)
Single aluminum frame with leather
pasted on the front of the aluminum frame

产品型号 Item No.	基材 Material	常规尺寸 Size
C-1-06	铝合金 Aluminum Alloy	564×476×50mm
C-1-07	铝合金 Aluminum Alloy	664×476×50mm
C-1-08	铝合金 Aluminum Alloy	764×476×50mm
C-1-09	铝合金 Aluminum Alloy	864×476×50mm
C-1-10	铝合金 Aluminum Alloy	964×476×50mm

颜色: 欧洲灰 备注: 进口海蒂诗轨道另配
Color: European Grey Note: Imported Hettich track is separately equipped

* 常规待选颜色:



颜色型号: B-19 颜色型号: B-20 颜色型号: BZ-15 颜色型号: BZ-16 颜色型号: BZ-17 颜色型号: BZ-18 颜色型号: BZ-25 颜色型号: BZ-26
Color NO: B-19 Color NO: B-20 Color NO: BZ-15 Color NO: BZ-16 Color NO: BZ-17 Color NO: BZ-18 Color NO: BZ-25 Color NO: BZ-26



玻璃平篮 GLASS FLAT

产品型号 Item No.	基材 Material	尺寸 Size (w*d*H)
C-7-06	铝合金 Aluminum Alloy	564 x 476 x 50 mm
C-7-07		664 x 476 x 50 mm
C-7-08		764 x 476 x 50 mm
C-7-09		864 x 476 x 50 mm
C-7-10		964 x 476 x 50 mm



活动裤架 MOVEABLE TROUSERS RA

产品型号 Item No.	基材 Material	尺寸 Size (w*d*H)
C-8-06	铝合金 Aluminum Alloy	564 x 476 x 50 mm
C-8-07		664 x 476 x 50 mm
C-8-08		764 x 476 x 50 mm
C-8-09		864 x 476 x 50 mm
C-8-10		964 x 476 x 50 mm



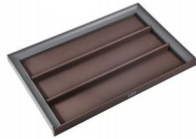
圆杆裤架 ROUND POLE TROUSEI

产品型号 Item No.	基材 Material	尺寸 Size (w*d*H)
C-9-06	铝合金 Aluminum Alloy	564 x 476 x 50 mm
C-9-07		664 x 476 x 50 mm
C-9-08		764 x 476 x 50 mm
C-9-09		864 x 476 x 50 mm
C-9-10		964 x 476 x 50 mm



百宝格 DIVIDING BOX

产品型号 Item No.	基材 Material	尺寸 Size (w*d*H)
C-10-06	铝合金 Aluminum Alloy	564 x 476 x 50 mm
C-10-07		664 x 476 x 50 mm
C-10-08		764 x 476 x 50 mm
C-10-09		864 x 476 x 50 mm
C-10-10		964 x 476 x 50 mm



分格篮 DIVIDER BASKET

产品型号 Item No.	基材 Material	尺寸 Size (w*d*H)
C-11-06	铝合金 Aluminum Alloy	564 x 476 x 50 mm
C-11-07		664 x 476 x 50 mm
C-11-08		764 x 476 x 50 mm
C-11-09		864 x 476 x 50 mm
C-11-10		964 x 476 x 50 mm



饰品盒 JEWELRY BOX

产品型号 Item No.	基材 Material	尺寸 Size (w*d*H)
C-12-06	铝合金 Aluminum Alloy	564 x 476 x 50 mm
C-12-07		664 x 476 x 50 mm
C-12-08		764 x 476 x 50 mm
C-12-09		864 x 476 x 50 mm
C-12-10		964 x 476 x 50 mm



内衣篮 UNDERWEAR BASKET

产品型号 Item No.	基材 Material	尺寸 Size (w*d*H)
C-13-06	铝合金 Aluminum Alloy	564 x 476 x 100 mm
C-13-07		664 x 476 x 100 mm
C-13-08		764 x 476 x 100 mm
C-13-09		864 x 476 x 100 mm
C-13-10		964 x 476 x 100 mm



皮篮 LEATHER BASKET

产品型号 Item No.	基材 Material	尺寸 Size (w*d*H)
C-14-06	铝合金 Aluminum Alloy	564 x 476 x 200 mm
C-14-07		664 x 476 x 200 mm
C-14-08		764 x 476 x 200 mm
C-14-09		864 x 476 x 200 mm
C-14-10		964 x 476 x 200 mm



经典首饰盒 CLASSIC JEWELRY BOX

产品型号 Item No.	基材 Material	尺寸 Size (w*d*H)
C-15-06	铝合金 Aluminum Alloy	564 x 476 x 50 mm
C-15-07		664 x 476 x 50 mm
C-15-08		764 x 476 x 50 mm
C-15-09		864 x 476 x 50 mm
C-15-10		964 x 476 x 50 mm



鞋架 SHOE RACK

产品型号 Item No.	基材 Material	尺寸 Size (w*d*H)
C-16-06	铝合金 Aluminum Alloy	564 x 476 x 265 mm
C-16-07		664 x 476 x 265 mm
C-16-08		764 x 476 x 265 mm
C-16-09		864 x 476 x 265 mm
C-16-10		964 x 476 x 265 mm



平篮 FLAT BASKET

产品型号 Item No.	基材 Material	尺寸 Size (w*d*H)
C-19-06	铝合金 Aluminum Alloy	564 x 476 x 50 mm
C-19-07		664 x 476 x 50 mm
C-19-08		764 x 476 x 50 mm
C-19-09		864 x 476 x 50 mm
C-19-10		964 x 476 x 50 mm



首饰盒 JEWELRY BOX

产品型号 Item No.	基材 Material	尺寸 Size (w*d*H)
C-20-06	铝合金 Aluminum Alloy	564 x 476 x 50 mm
C-20-07		664 x 476 x 50 mm
C-20-08		764 x 476 x 50 mm
C-20-09		864 x 476 x 50 mm
C-20-10		964 x 476 x 50 mm



污衣篮 LAUNDRY BASKET

产品型号 Item No.	基材 Material	尺寸 Size (w*d*H)
C-21-06	铝合金 Aluminum Alloy	564 x 476 x 550 mm
C-21-07		664 x 476 x 550 mm
C-21-08		764 x 476 x 550 mm
C-21-09		864 x 476 x 550 mm
C-21-10		964 x 476 x 550 mm

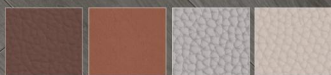




STEVEN D MINIMALIST STORAGE

史蒂文-D系列

* 常规待选颜色:



颜色型号: BZ-15 颜色型号: BZ-16 颜色型号: B-19 颜色型号: B-20
Color NO: BZ-15 Color NO: BZ-16 Color NO: B-19 Color NO: B-20

STEVEN D
史蒂文-D系列



经典珠宝盒 CLASSIC JEWELRY BOX

产品型号 Item No.	基材 Material	尺寸 Size (w*d*h)
D-1-06	铝合金 Aluminum Alloy	564 x 476 x 50 mm
D-1-07		664 x 476 x 50 mm
D-1-08		764 x 476 x 50 mm
D-1-09		864 x 476 x 50 mm
D-1-10		964 x 476 x 50 mm



百宝格 DIVIDING BOX

产品型号 Item No.	基材 Material	尺寸 Size (w*d*h)
D-10-06	铝合金 Aluminum Alloy	564 x 476 x 50 mm
D-10-07		664 x 476 x 50 mm
D-10-08		764 x 476 x 50 mm
D-10-09		864 x 476 x 50 mm
D-10-10		964 x 476 x 50 mm



活动裤架 MOVABLE TROUSER RACK

产品型号 Item No.	基材 Material	尺寸 Size (w*d*h)
D-8-06	铝合金 Aluminum Alloy	564 x 476 x 50 mm
D-8-07		664 x 476 x 50 mm
D-8-08		764 x 476 x 50 mm
D-8-09		864 x 476 x 50 mm
D-8-10		964 x 476 x 50 mm



皮篮 LEATHER BASKET

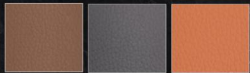
产品型号 Item No.	基材 Material	尺寸 Size (w*d*h)
D-14-06	铝合金 Aluminum Alloy	564 x 476 x 200 mm
D-14-07		664 x 476 x 200 mm
D-14-08		764 x 476 x 200 mm
D-14-09		864 x 476 x 200 mm
D-14-10		964 x 476 x 200 mm

BOHEMIAN
MINIMALIST STORAGE

波西米亚系列-简约收纳设计



* 常规待选颜色:



颜色型号: B-3
Color NO: B-3

颜色型号: B-11
Color NO: B-11

颜色型号: B-14
Color NO: B-14



颜色型号: B-15
Color NO: B-15

颜色型号: B-19
Color NO: B-19

颜色型号: B-20
Color NO: B-20



鞋架 SHOE RACK

产品型号 Item No.	基材 Material	尺寸 Size (w*d*h)
K1-06	碳钢 Carbon Steel	564 x 466 x 230 mm
K1-08		764 x 466 x 230 mm
K1-09		864 x 466 x 230 mm
K1-10		964 x 466 x 230 mm



平篮 FLAT BASKET

产品型号 Item No.	基材 Material	尺寸 Size (w*d*h)
K2-06	碳钢 Carbon Steel	564 x 466 x 65 mm
K2-08		764 x 466 x 65 mm
K2-09		864 x 466 x 65 mm
K2-10		964 x 466 x 65 mm



皮篮 LEATHER BASKET

产品型号 Item No.	基材 Material	尺寸 Size (w*d*h)
K3-06	碳钢 Carbon Steel	564 x 466 x 265 mm
K3-08		764 x 466 x 265 mm
K3-09		864 x 466 x 265 mm
K3-10		964 x 466 x 265 mm



裤架(含首饰盒) TROUSERS RACK(INCLUDING JEWELRY BOX)

产品型号 Item No.	基材 Material	尺寸 Size (w*d*h)
K4-06	碳钢 Carbon Steel	564 x 466 x 65 mm
K4-08		764 x 466 x 65 mm
K4-09		864 x 466 x 65 mm
K4-10		964 x 466 x 65 mm



分隔篮 DIVIDER BASKET

产品型号 Item No.	基材 Material	尺寸 Size (w*d*h)
K6-06	碳钢 Carbon Steel	564 x 466 x 65 mm
K6-08		764 x 466 x 65 mm
K6-09		864 x 466 x 65 mm
K6-10		964 x 466 x 65 mm



百宝格 BAIBAOGE

产品型号 Item No.	基材 Material	尺寸 Size (w*d*h)
K7-06	碳钢 Carbon Steel	564 x 466 x 65 mm
K7-08		764 x 466 x 65 mm
K7-09		864 x 466 x 65 mm
K7-10		964 x 466 x 65 mm



活动裤架 MOVABLE TROUSER RACK

产品型号 Item No.	基材 Material	尺寸 Size (w*d*h)
K8-06	碳钢+实木 Carbon Steel + WOOD	564 x 466 x 65 mm (含裤架衣杆)
K8-08		764 x 466 x 65 mm (含裤架衣杆)
K8-09		864 x 466 x 65 mm (含裤架衣杆)
K8-10		964 x 466 x 65 mm (含裤架衣杆)



首饰盒 JEWELRY BOX

产品型号 Item No.	基材 Material	尺寸 Size (w*d*h)
K14-06	碳钢 Carbon Steel	564 x 466 x 65 mm
K14-08		764 x 466 x 65 mm
K14-09		864 x 466 x 65 mm
K14-10		964 x 466 x 65 mm



Series Pull Basket

首创皮铝艺术结合

经典的设计往往在于它的轮廓与触感,将高定风格融入丰富收纳中
蕴含精巧的设计细节,满足了视觉与触觉的双重体验

Classic designs often rely on their contours and tactile feel.
Integrates high-definition style into rich storage,
blending exquisite design details to meet the dual experience of visual and tactile senses.



活动裤架 MOVABLE TROUSER RACK

产品型号 Item No.	基材 Material	尺寸 Size (w*d*h)
X-1-06	铝合金 Aluminum Alloy	564 x 486 x 50 mm
X-1-07		664 x 486 x 50 mm
X-1-08		764 x 486 x 50 mm
X-1-09		864 x 486 x 50 mm
X-1-10		964 x 486 x 50 mm



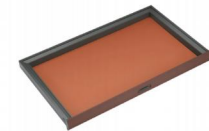
首饰盒 MOVEABLE TROUSERS RACK

产品型号 Item No.	基材 Material	尺寸 Size (w*d*h)
X-2-06	铝合金 Aluminum Alloy	564 x 486 x 50 mm
X-2-07		664 x 486 x 50 mm
X-2-08		764 x 486 x 50 mm
X-2-09		864 x 486 x 50 mm
X-2-10		964 x 486 x 50 mm



皮篮 LEATHER BASKET

产品型号 Item No.	基材 Material	尺寸 Size (w*d*h)
X-3-06	铝合金 Aluminum Alloy	564 x 486 x 200 mm
X-3-07		664 x 486 x 200 mm
X-3-08		764 x 486 x 200 mm
X-3-09		864 x 486 x 200 mm
X-3-10		964 x 486 x 200 mm



平篮 FLAT BASKET

产品型号 Item No.	基材 Material	尺寸 Size (w*d*h)
X-4-06	铝合金 Aluminum Alloy	564 x 486 x 50 mm
X-4-07		664 x 486 x 50 mm
X-4-08		764 x 486 x 50 mm
X-4-09		864 x 486 x 50 mm
X-4-10		964 x 486 x 50 mm



APPLE SERIES
MINIMALIST STORAGE

苹果系列-简约收纳设计

* 常规待选颜色:



颜色型号: B-2
Color NO: B-2

裤架 TROUSERS RACK

产品型号 Item No.	基材 Material	尺寸 Size (wxd*H)
F-1-06	铝材 Aluminum Material	(557-590) x 450 x 60 mm
F-1-07		(657-690) x 450 x 60 mm
F-1-08		(757-790) x 450 x 60 mm
F-1-09		(857-890) x 450 x 60 mm
F-1-10		(957-990) x 450 x 60 mm



平篮 FLAT BASKET

产品型号 Item No.	基材 Material	尺寸 Size (wxd*H)
F-2-06 (AL)	铝材 Aluminum Material	(557-590) x 450 x 60 mm
F-2-07 (AL)		(657-690) x 450 x 60 mm
F-2-08 (AL)		(757-790) x 450 x 60 mm
F-2-09 (AL)		(857-890) x 450 x 60 mm
F-2-10 (AL)		(957-990) x 450 x 60 mm



百宝格 DIVIDING BOX

产品型号 Item No.	基材 Material	尺寸 Size (wxd*H)
F-4-06	铝材 Aluminum Material	(557-590) x 450 x 60 mm
F-4-07		(657-690) x 450 x 60 mm
F-4-08		(757-790) x 450 x 60 mm
F-4-09		(857-890) x 450 x 60 mm
F-4-10		(957-990) x 450 x 60 mm



首饰盒 JEWELRY BOX

产品型号 Item No.	基材 Material	尺寸 Size (wxd*H)
F-5-06	铝材 Aluminum Material	(557-590) x 450 x 60 mm
F-5-07		(657-690) x 450 x 60 mm
F-5-08		(757-790) x 450 x 60 mm
F-5-09		(857-890) x 450 x 60 mm
F-5-10		(957-990) x 450 x 60 mm



珍宝盒 TREASURE BOX

产品型号 Item No.	基材 Material	尺寸 Size (wxd*H)
F-6-06	铝材 Aluminum Material	(557-590) x 450 x 60 mm
F-6-07		(657-690) x 450 x 60 mm
F-6-08		(757-790) x 450 x 60 mm
F-6-09		(857-890) x 450 x 60 mm
F-6-10		(957-990) x 450 x 60 mm



内衣盒 UNDERWEAR BOX

产品型号 Item No.	基材 Material	尺寸 Size (wxd*H)
F-7-06	铝材 Aluminum Material	(557-590) x 450 x 100 mm
F-7-07		(657-690) x 450 x 100 mm
F-7-08		(757-790) x 450 x 100 mm
F-7-09		(857-890) x 450 x 100 mm
F-7-10		(957-990) x 450 x 100 mm



皮篮 LEATHER BASKET

产品型号 Item No.	基材 Material	尺寸 Size (wxd*H)
F-8-06	铝材 Aluminum Material	(557-590) x 450 x 200 mm
F-8-07		(657-690) x 450 x 200 mm
F-8-08		(757-790) x 450 x 200 mm
F-8-09		(857-890) x 450 x 200 mm
F-8-10		(957-990) x 450 x 200 mm



鞋架 SHOE RACK

产品型号 Item No.	基材 Material	尺寸 Size (wxd*H)
F-9-06	铝材 Aluminum Material	(557-590) x 450 x 180 mm
F-9-07		(657-690) x 450 x 180 mm
F-9-08		(757-790) x 450 x 180 mm
F-9-09		(857-890) x 450 x 180 mm
F-9-10		(957-990) x 450 x 180 mm

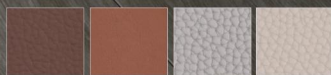




APPLE SERIES MINIMALIST STORAGE

罗马系列-简约收纳设计

* 常规待选颜色:



颜色型号: BZ-15
Color NO: BZ-15

颜色型号: BZ-16
Color NO: BZ-16

颜色型号: B-19
Color NO: B-19

颜色型号: B-20
Color NO: B-20

ROMAN
罗马系列



活动裤架 MOVABLE TROUSER RACK

产品型号 Item No.	基材 Material	尺寸 Size (w*d*H)
R-1-06	铝合金 Aluminum Alloy	564 x 476 x 52 mm
R-1-07		664 x 476 x 52 mm
R-1-08		764 x 476 x 52 mm
R-1-09		864 x 476 x 52 mm
R-1-10		964 x 476 x 52 mm



百宝格 DIVIDING BOX

产品型号 Item No.	基材 Material	尺寸 Size (w*d*H)
R-3-06	铝合金 Aluminum Alloy	564 x 476 x 95 mm
R-3-07		664 x 476 x 95 mm
R-3-08		764 x 476 x 95 mm
R-3-09		864 x 476 x 95 mm
R-3-10		964 x 476 x 95 mm



饰品盒 TREASURE BOX

产品型号 Item No.	基材 Material	尺寸 Size (w*d*H)
R-5-06	铝合金 Aluminum Alloy	564 x 476 x 95 mm
R-5-07		664 x 476 x 95 mm
R-5-08		764 x 476 x 95 mm
R-5-09		864 x 476 x 95 mm
R-5-10		964 x 476 x 95 mm



皮篮 LEATHER BASKET

产品型号 Item No.	基材 Material	尺寸 Size (w*d*H)
R-7-06	铝合金 Aluminum Alloy	564 x 476 x 255 mm
R-7-07		664 x 476 x 255 mm
R-7-08		764 x 476 x 255 mm
R-7-09		864 x 476 x 255 mm
R-7-10		964 x 476 x 255 mm



皮篮折叠式 FOLDABLE LEATHER BASKET

产品型号 Item No.	基材 Material	尺寸 Size (w*d*H)
R-12-06	铝合金 Aluminum Alloy	564 x 476 x 255 mm
R-12-07		664 x 476 x 255 mm
R-12-08		764 x 476 x 255 mm
R-12-09		864 x 476 x 255 mm
R-12-10		964 x 476 x 255 mm



MILAN MINIMALIST STORAGE

米兰系列-简约收纳设计

* 常规待选颜色:



颜色型号: BZ-18
Color NO: BZ-18

颜色型号: B-20
Color NO: B-20

MILAN
米兰系列



活动裤架 MOVABLE TROUSER RACK

产品型号 Item No.	基材 Material	尺寸 Size (w×d×h)
M-1-06	铝合金+木 Aluminum Alloy+Wood	564 x 466 x 80 mm
M-1-07		664 x 466 x 80 mm
M-1-08		764 x 466 x 80 mm
M-1-09		864 x 466 x 80 mm
M-1-10		964 x 466 x 80 mm



百宝格 BAIBAOGE

产品型号 Item No.	基材 Material	尺寸 Size (w×d×h)
M-2-06	铝合金+木 Aluminum Alloy+Wood	564 x 466 x 80 mm
M-2-07		664 x 466 x 80 mm
M-2-08		764 x 466 x 80 mm
M-2-09		864 x 466 x 80 mm
M-2-10		964 x 466 x 80 mm



首饰盒 JEWELRY BOX

产品型号 Item No.	基材 Material	尺寸 Size (w×d×h)
M-3-06	铝合金+木 Aluminum Alloy+Wood	564 x 466 x 80 mm
M-3-07		664 x 466 x 80 mm
M-3-08		764 x 466 x 80 mm
M-3-09		864 x 466 x 80 mm
M-3-10		964 x 466 x 80 mm



皮篮 LEATHER BASKET

产品型号 Item No.	基材 Material	尺寸 Size (w×d×h)
M-4-06	铝合金+木 Aluminum Alloy+Wood	564 x 466 x 210 mm
M-4-07		664 x 466 x 210 mm
M-4-08		764 x 466 x 210 mm
M-4-09		864 x 466 x 210 mm
M-4-10		964 x 466 x 210 mm



TORINO
MINIMALIST STORAGE

托里系列-简约收纳设计

TORINO
托里系列



裤架 TROUSER RACK

产品型号 Item No.	基材 Material	尺寸 Size (w*d*h)
T-1-06	铝合金 Aluminum Alloy	564 x 466 x 55 mm
T-1-07		664 x 466 x 55 mm
T-1-08		764 x 466 x 55 mm
T-1-09		864 x 466 x 55 mm
T-1-10		964 x 466 x 55 mm



百宝格 DIVIDING BOX

产品型号 Item No.	基材 Material	尺寸 Size (w*d*h)
T-2-09	铝合金 Aluminum Alloy	864 x 466 x 55 mm



首饰盒 JEWELRY BOX

产品型号 Item No.	基材 Material	尺寸 Size (w*d*h)
T-3-09	铝合金 Aluminum Alloy	864 x 466 x 55 mm



皮篮 LEATHER BASKET

产品型号 Item No.	基材 Material	尺寸 Size (w*d*h)
T-4-09	铝合金 Aluminum Alloy	864 x 466 x 200 mm



活动盒子 MOVABLE BOX

产品型号 Item No.	基材 Material	尺寸 Size (w*d*h)
/	全木 Whole Wood	250 x 155 x 30 mm



VENICE MINIMALIST STORAGE

威尼斯系列-简约收纳设计

VENICE
威尼斯系列



皮革首饰盒 JEWELRY BOX

产品型号 Item No.	基材 Material	尺寸 Size (w*d*h)
V-1	木 Wood	专属订制, 需提供布局图纸



皮革首饰盒 JEWELRY BOX

产品型号 Item No.	基材 Material	尺寸 Size (w*d*h)
V-2	木 Wood	专属订制, 需提供布局图纸



皮革首饰盒 JEWELRY BOX

产品型号 Item No.	基材 Material	尺寸 Size (w*d*h)
V-3	木 Wood	专属订制, 需提供布局图纸



皮革首饰盒 JEWELRY BOX

产品型号 Item No.	基材 Material	尺寸 Size (w*d*h)
V-4	木 Wood	专属订制, 需提供布局图纸



*可选配导轨



*可选配导轨



HARDWARE

功能五金类

首创皮铝艺术结合

审美的边界，影响艺术的造语，技术的革新，决定生活的形态，
提升家居的格调。

The boundary of aesthetics affects the attainments of art,
The innovation of technology determines the form of life,
enhance the style of home.

颜色: B系列 BZ系列任选
Color: B Series/BZ Series-Optional



颜色: B2 红豆红
Color: B2 Cowpea Red



360°旋转鞋架 360° DEGREE ROTATING SHOE RACK

产品型号 Item No.	基材 Material	尺寸 Size (w×d×h)
F-10-04	铝 + 塑料 Aluminum + Plastic	730 x 350 x (930-1080) mm
F-10-05		730 x 350 x (1080-1230) mm
F-10-06		730 x 350 x (1230-1380) mm
F-10-07		730 x 350 x (1380-1530) mm
F-10-08		730 x 350 x (1530-1680) mm
F-10-09		730 x 350 x (1680-1830) mm
F-10-10		730 x 350 x (1830-1980) mm
F-10-11		730 x 350 x (1980-2130) mm
F-10-12		730 x 350 x (2130-2780) mm

360°旋转鞋架 360° DEGREE ROTATING SHOE RACK

产品型号 Item No.	基材 Material	尺寸 Size (w×d×h)
F-10-04 A	铝合金 + 锌合金 Aluminum Alloy + Zinc Alloy	730 x 350 x (790-1070) mm
F-10-06 A		730 x 350 x (1070-1350) mm
F-10-08 A		730 x 350 x (1350-1630) mm
F-10-10 A		730 x 350 x (1630-1910) mm
F-10-12 A		730 x 350 x (1910-2185) mm

颜色: B系列 BZ系列任选
Color: B Series/BZ Series-Optional



颜色: B2 红豆红
Color: B2 Cowpea Red



旋转多功能组合架 ROTATING MULTIFUNCTIONAL COMBINATION RACK

产品型号 Item No.	基材 Material	尺寸 Size (w×d)
F-11-06	铝 + 塑料 Aluminum + Plastic	∅700 x (1900-2100) mm

旋转多功能组合架 ROTATING MULTIFUNCTIONAL COMBINATION RACK

产品型号 Item No.	基材 Material	尺寸 Size (w×d)
F-11-06A	铝合金 + 锌合金 Aluminum Alloy + Zinc Alloy	∅700 x (1900-2100) mm

颜色: BZ-15 摩卡棕 BZ-16 蓝山橙
备注: 不接受非标定制
Color: BZ-15 Mocha Brown BZ-16 Blue Mountain Orange
Note: Non-standard customizations not accepted



双缓冲升降挂衣器 DOUBLE BUFFERING LIFTING CLOTHES HANGER

产品型号 Item No.	基材 Material	尺寸 Size (w×h)
A2-07 (700-900)	铝合金 + 塑料 Aluminum Alloy + Plastic	(645-920) x 850 mm
A2-10 (1000-1200)		(890-1250) x 850 mm

颜色: BZ-15 摩卡棕 BZ-16 蓝山橙
备注: 不接受非标定制
Color: BZ-15 Mocha Brown BZ-16 Blue Mountain Orange
Note: Non-standard customizations not accepted



双缓冲升降挂衣器 DOUBLE BUFFERING LIFTING CLOTHES HANGER

产品型号 Item No.	基材 Material	尺寸 Size (w×h)
CN2-07 (700-900)	铝合金 + 塑料 Aluminum Alloy + Plastic	(645-920) x 850 mm
CN2-10 (1000-1200)		(890-1250) x 850 mm

颜色: 灰色
备注: 不接受非标定制
Color: Grey
Note: Non-standard customizations not accepted



双阻尼升降挂衣器 DOUBLE DAMPING LIFTING CLOTHES HANGER

产品型号 Item No.	基材 Material	尺寸 Size (w×d×h)
CN4-07 (700-800)	铁 + 塑料 Steel + Plastic	150 x 900 x (600-850) mm
CN4-07 (800-1100)		150 x 900 x (850-1200) mm

颜色: BZ-15 摩卡棕 BZ-16 蓝山橙
备注: 不接受非标定制
Color: BZ-15 Mocha Brown BZ-16 Blue Mountain Orange
Note: Non-standard customizations not accepted



电动升降衣架 ELECTRIC LIFTING CLOTHES HANGER

产品型号 Item No.	基材 Material	尺寸 Size (w×h)
CN1-07 (700-900)	铝合金 + 塑料 Aluminum Alloy + Plastic	(645-920) x 850 mm
CN1-10 (1000-1200)		(890-1250) x 850 mm

颜色: BZ-15 摩卡棕 BZ-16 蓝山橙
备注: 不接受非标定制
Color: BZ-15 Mocha Brown BZ-16 Blue Mountain Orange
Note: Non-standard customizations not accepted



双缓冲升降挂衣器 DOUBLE BUFFERING LIFTING CLOTHES HANGER

产品型号 Item No.	基材 Material	尺寸 Size (w×h)
CN3-07 (700-900)	铝合金 + 塑料 Aluminum Alloy + Plastic	(645-920) x 850 mm
CN3-10 (1000-1200)		(890-1250) x 850 mm

颜色: BZ-15 摩卡棕 BZ-16 蓝山橙
备注: 不接受非标定制
Color: BZ-15 Mocha Brown BZ-16 Blue Mountain Orange
Note: Non-standard customizations not accepted



单臂升降衣架 SINGLE ARM LIFTING CLOTHES RACK

产品型号 Item No.	基材 Material	尺寸 Size (w×d×h)
A-3	铝合金 Aluminum Alloy	144 x 468 x 775 mm



HARDWARE

功能五金类

颜色: BZ-15摩卡棕 BZ-16蓝山橙
备注: 不接受非标定制
Color: BZ-15 Mocha Brown BZ-16 Blue Mountain Orange
Note: Non standard customizations not accepted



顶装衣架 TOP MOUNTED HANGER

产品型号 Item No.	基材 Material	尺寸 Size (w×d×h)
A-6	铝合金 Aluminum Alloy	60 x 464 x 238 mm

颜色: 灰色、咖啡色
备注: 不接受非标定制
Color: Grey, Coffee Brown
Note: Non standard customizations not accepted



阻尼顶装挂衣架 DAMPING TOP MOUNTED CLOTHES HANGER

产品型号 Item No.	基材 Material	尺寸 Size (w×d×h)
F-14	铝合金+塑料 Aluminum Alloy+Plastic	120 x 355 x 135 mm

颜色: BZ-15摩卡棕 BZ-16蓝山橙
备注: 不接受非标定制
Color: BZ-15 Mocha Brown BZ-16 Blue Mountain Orange
Note: Non standard customizations not accepted



单排裤架 SINGLE ROW PANTS RACK

产品型号 Item No.	基材 Material	尺寸 Size (w×d×h)
A-4	铝合金 Aluminum Alloy	587 x 464 x 238 mm

颜色: 灰色、咖啡色
备注: 不接受非标定制
Color: Grey, Coffee Brown
Note: Non standard customizations not accepted



阻尼顶装单排裤架 DAMPING SIDE PANTS RACK

产品型号 Item No.	基材 Material	尺寸 Size (w×d×h)
F-15	铝合金+塑料 Aluminum Alloy+Plastic	350 x 450 x 120 mm

颜色: BZ-15摩卡棕 BZ-16蓝山橙
备注: 不接受非标定制
Color: BZ-15 Mocha Brown BZ-16 Blue Mountain Orange
Note: Non standard customizations not accepted



双排裤架 SINGLE ARM LIFTING CLOTHES RACK

产品型号 Item No.	基材 Material	尺寸 Size (w×d×h)
A-5	铝合金 Aluminum Alloy	641 x 464 x 238 mm

颜色: 灰色、咖啡色
备注: 不接受非标定制
Color: Grey, Coffee Brown
Note: Non standard customizations not accepted



阻尼双排顶装裤架 DAMPING DOUBLE ROW/TOP MOUNTED PANTS RACK

产品型号 Item No.	基材 Material	尺寸 Size (w×d×h)
F-16	铝合金+塑料 Aluminum Alloy+Plastic	640 x 450 x 120 mm

颜色: 灰色、咖啡色
备注: 不接受非标定制
Color: Grey, Coffee Brown
Note: Non standard customizations not accepted



阻尼侧装裤架 DAMPING SIDE PANTS RACK

产品型号 Item No.	基材 Material	尺寸 Size (w×d×h)
F-13	铝合金+塑料 Aluminum Alloy+Plastic	360 x 450 x 120 mm

颜色: 灰色
备注: 不接受非标定制
Color: Grey
Note: Non standard customizations not accepted

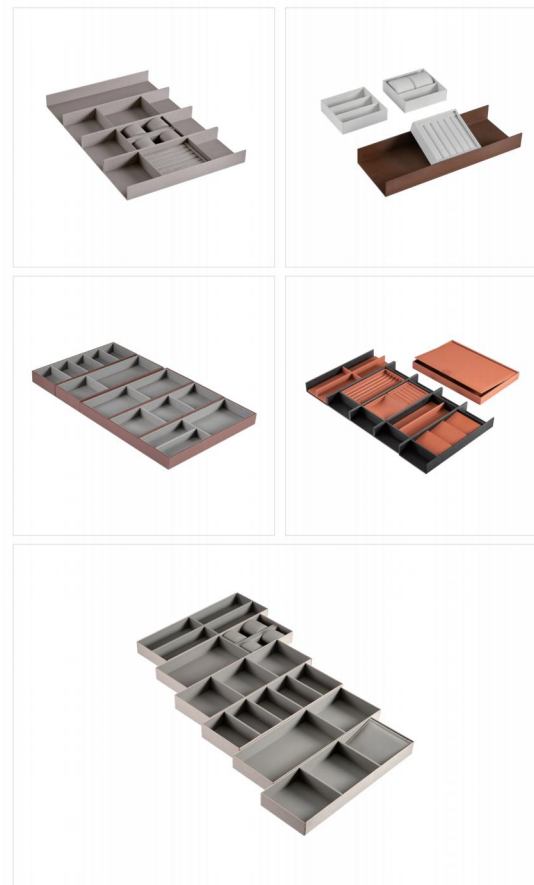


折叠旋转烫衣板(加强钢款) FOLD & SWIVEL IRONING BOARD

产品型号 Item No.	基材 Material	尺寸 Size (w×d×h)
T204	铝合金+碳钢 Aluminum Alloy+galsteel	480 x 300 x 145 mm



OPTIONAL COMBINATION 自选产品搭配



STORAGE

定制收纳类

颜色: 常用颜色 B系列

Color: Commonly used color B series



通用托盘 UNIVERSAL TRAY

产品型号 Item No.	基材 Material	尺寸 Size (w×d×h)
SP-1	铝 Aluminum	155 x 428 x 50 mm

颜色: 常用颜色 B系列

Color: Commonly used color B series

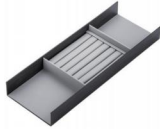


领带托盘 TIE TRAY

产品型号 Item No.	基材 Material	尺寸 Size (w×d×h)
SP-2	铝 Aluminum	155 x 428 x 50 mm

颜色: 常用颜色 B系列

Color: Commonly used color B series



戒指托盘 RING TRAY

产品型号 Item No.	基材 Material	尺寸 Size (w×d×h)
SP-3	铝 Aluminum	155 x 428 x 50 mm

颜色: 常用颜色 B系列

Color: Commonly used color B series



手表托盘 WATCH TRAY

产品型号 Item No.	基材 Material	尺寸 Size (w×d×h)
SP-4	铝 Aluminum	155 x 428 x 50 mm

颜色: B-25

Color: B-25



手表模块 WATCH MODULE

产品型号 Item No.	基材 Material	尺寸 Size (w×d×h)
MK-01	木 Wood	140 x 140 x 50 mm

颜色: B-25

Color: B-25



分隔模块 SEPARATION MODULE

产品型号 Item No.	基材 Material	尺寸 Size (w×d×h)
MK-02	木 Wood	140 x 140 x 50 mm

颜色: B-25

Color: B-25



戒指模块 RING MODULE

产品型号 Item No.	基材 Material	尺寸 Size (w×d×h)
MK-03	木 Wood	140 x 140 x 50 mm

STORAGE

定制收纳类

颜色: 常用颜色 B系列

Color: Commonly used color B series



多功能收纳盒 5分隔内部空间 MULTIFUNCTIONAL STORAGE BOX 5

产品型号 Item No.	基材 Material	尺寸 Size (w×d×h)
ZQSP-01	中纤板 MDF	155 x 428 x 50 mm

颜色: 常用颜色 B系列

Color: Commonly used color B series



多功能收纳盒 2分隔内部空间 MULTIFUNCTIONAL STORAGE BOX 2

产品型号 Item No.	基材 Material	尺寸 Size (w×d×h)
ZQSP-02	中纤板 MDF	155 x 428 x 50 mm

颜色: 常用颜色 B系列

Color: Commonly used color B series



多功能收纳盒 3分隔内部空间 MULTIFUNCTIONAL STORAGE BOX 3

产品型号 Item No.	基材 Material	尺寸 Size (w×d×h)
ZQSP-03	中纤板 MDF	155 x 428 x 50 mm

颜色: 常用颜色 B系列

Color: Commonly used color B series



耳饰戒指收纳盒 EARRING RING STORAGE BOX

产品型号 Item No.	基材 Material	尺寸 Size (w×d×h)
ZQSP-04	中纤板 MDF	155 x 428 x 50 mm

颜色: 常用颜色 B系列

Color: Commonly used color B series

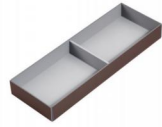


多功能收纳盒 3分隔内部空间 MULTIFUNCTIONAL STORAGE BOX 2

产品型号 Item No.	基材 Material	尺寸 Size (w×d×h)
ZQSP-05	中纤板 MDF	155 x 428 x 50 mm

STORAGE

定制收纳类



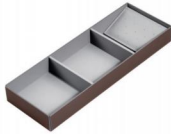
多功能收纳盒 2分隔内部空间 MULTIFUNCTIONAL STORAGE BOX 2

产品型号 Item No.	基材 Material	尺寸 Size (w×d×h)
HML-0006	铝合金 Aluminum Alloy	150 x 428 x 50 mm



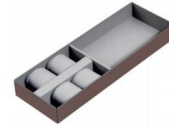
多功能收纳盒 4分隔内部空间 MULTIFUNCTIONAL STORAGE BOX 4

产品型号 Item No.	基材 Material	尺寸 Size (w×d×h)
HML-0007	铝合金 Aluminum Alloy	150 x 428 x 50 mm



耳饰收纳盒 EAR ACCESSORY STORAGE BOX...

产品型号 Item No.	基材 Material	尺寸 Size (w×d×h)
HML-0008	铝合金 Aluminum Alloy	150 x 428 x 50 mm



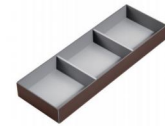
手表收纳盒 WATCH STORAGE BOX

产品型号 Item No.	基材 Material	尺寸 Size (w×d×h)
HML-0009	铝合金 Aluminum Alloy	150 x 428 x 50 mm



多功能收纳盒 5分隔内部空间 MULTIFUNCTIONAL STORAGE BOX 5

产品型号 Item No.	基材 Material	尺寸 Size (w×d×h)
HML-0010	铝合金 Aluminum Alloy	150 x 428 x 50 mm



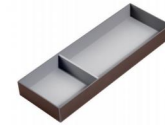
多功能收纳盒 3分隔内部空间 MULTIFUNCTIONAL STORAGE BOX 2

产品型号 Item No.	基材 Material	尺寸 Size (w×d×h)
HML-0011	铝合金 Aluminum Alloy	150 x 428 x 50 mm



多功能收纳盒 3分隔内部空间 MULTIFUNCTIONAL STORAGE BOX 3

产品型号 Item No.	基材 Material	尺寸 Size (w×d×h)
HML-0012	铝合金 Aluminum Alloy	150 x 428 x 50 mm



多功能收纳盒 2分隔内部空间 MULTIFUNCTIONAL STORAGE BOX 2

产品型号 Item No.	基材 Material	尺寸 Size (w×d×h)
HML-0013	铝合金 Aluminum Alloy	150 x 428 x 50 mm

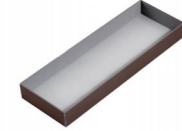
STORAGE

定制收纳类



耳饰戒指收纳盒 EARRING RING STORAGE BOX

产品型号 Item No.	基材 Material	尺寸 Size (w×d×h)
HML-0014	铝合金 Aluminum Alloy	150 x 428 x 50 mm

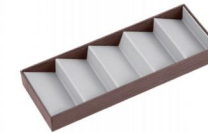


多功能收纳盒内部空间 MULTIFUNCTIONAL STORAGE BOX

产品型号 Item No.	基材 Material	尺寸 Size (w×d×h)
HML-0015	铝合金 Aluminum Alloy	150 x 428 x 50 mm

颜色: B系皮革

Color: B Series Leather



项链盒 NECKLACE BOX

产品型号 Item No.	基材 Material	尺寸 Size (w×d×h)
SP-22	铝合金 Aluminum Alloy	150 x 428 x 50 mm

颜色: B系皮革

Color: B Series Leather



耳钉盒 EARRINGS BOX

产品型号 Item No.	基材 Material	尺寸 Size (w×d×h)
SP-23	铝合金 Aluminum Alloy	150 x 428 x 50 mm

颜色: B系皮革

Color: B Series Leather



戒指盒 RING BOX

产品型号 Item No.	基材 Material	尺寸 Size (w×d×h)
SP-24	铝合金 Aluminum Alloy	150 x 428 x 50 mm

颜色: B系皮革

Color: B Series Leather



戒指分隔盒 DIVIDER BOX

产品型号 Item No.	基材 Material	尺寸 Size (w×d×h)
SP-25	铝合金 Aluminum Alloy	150 x 428 x 50 mm

STORAGE

订制收纳类

颜色: 烟熏黑檀
Color: Smoked Ebony



通用托盘 1 UNIVERSAL TRAY 1

产品型号 Item No.	基材 Material	尺寸 Size (w×d×h)
Rm-1	抗倍特 HPL Compact Board	150 x 421 x 50 mm

颜色: 烟熏黑檀
Color: Smoked Ebony



通用托盘 2 UNIVERSAL TRAY 2

产品型号 Item No.	基材 Material	尺寸 Size (w×d×h)
Rm-2	抗倍特 HPL Compact Board	155 x 421 x 50 mm

颜色: 烟熏黑檀
Color: Smoked Ebony



通用托盘 3 UNIVERSAL TRAY 3

产品型号 Item No.	基材 Material	尺寸 Size (w×d×h)
Rm-3	抗倍特 HPL Compact Board	155 x 150 x 50 mm

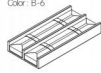
颜色: 常用颜色 B 系列
Color: Commonly used color B series



手表格 WATCH DIVIDER

产品型号 Item No.	基材 Material	尺寸 Size (w×d×h)
Rm-4	抗倍特 HPL Compact Board	140 x 280 x 40 mm

颜色: B-6
Color: B-6



手表格 WATCH DIVIDER

产品型号 Item No.	基材 Material	尺寸 Size (w×d×h)
Rm-5	抗倍特 HPL Compact Board	140 x 280 x 40 mm

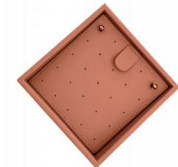
颜色: B-6
Color: B-6



戒指格 RING DIVIDER

产品型号 Item No.	基材 Material	尺寸 Size (w×d×h)
Rm-6	木 Wood	140 x 140 x 40 mm

颜色: B-6
Color: B-6



手鐲格 EARRING DIVIDER

产品型号 Item No.	基材 Material	尺寸 Size (w×d×h)
Rm-7	木 Wood	140 x 140 x 40 mm

颜色: B-6
Color: B-6



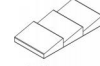
耳钉格 BRACELET DIVIDER

产品型号 Item No.	基材 Material	尺寸 Size (w×d×h)
Rm-8	木 Wood	140 x 140 x 40 mm

STORAGE

订制收纳类

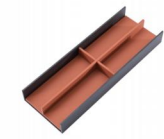
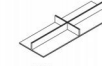
颜色: 常用颜色 B 系列
Color: Commonly used color B series



手鐲格 BRACELET DIVIDER

产品型号 Item No.	基材 Material	尺寸 Size (w×d×h)
Rm-9	抗倍特 HPL Compact Board	140 x 280 x 40 mm

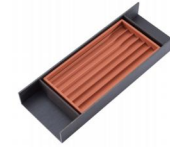
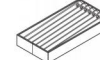
颜色: 常用颜色 B 系列
Color: Commonly used color B series



眼镜格 GLASSES DIVIDER

产品型号 Item No.	基材 Material	尺寸 Size (w×d×h)
Rm-10	抗倍特 HPL Compact Board	140 x 422 x 40 mm

颜色: 常用颜色 B 系列
Color: Commonly used color B series



项链格 NECKLECE DIVIDER

产品型号 Item No.	基材 Material	尺寸 Size (w×d×h)
Rm-11	抗倍特 HPL Compact Board	140 x 280 x 40 mm

颜色: 常用颜色 B 系列
Color: Commonly used color B series



私密收藏盒带盖 PRIVATE COLLECTION BOX

产品型号 Item No.	基材 Material	尺寸 Size (w×d×h)
Rm-12	木 Wood	300 x 422 x 40 mm

颜色: 常用颜色 B 系列
Color: Commonly used color B series



分隔盒 PRIVATE COLLECTION BOX

产品型号 Item No.	基材 Material	尺寸 Size (w×d×h)
Rm-13	抗倍特 HPL Compact Board	140 x 280 x 40 mm

颜色: 常用颜色 B 系列
Color: Commonly used color B series



分隔盒 PRIVATE COLLECTION BOX

产品型号 Item No.	基材 Material	尺寸 Size (w×d×h)
Rm-14	木 Wood	140 x 140 x 40 mm

STORAGE

定制收纳类

颜色：常用颜色B系列
Color: Commonly used color B series



调节盒 ADJUSTING BOX

产品型号 Item No.	基材 Material	尺寸 Size (w×d×h)
SP-11	全铝 Aluminum	155 x 410 x 50 mm

颜色：B系皮革
Color: B Series Leather



手表盒 WATCH BOX

产品型号 Item No.	基材 Material	尺寸 Size (w×d×h)
SP-19	铝+木 Aluminum+Wood	250 x 428 x 50 mm

颜色：B系皮革
Color: B Series Leather



多功能分隔盒 JEWELRY BOX

产品型号 Item No.	基材 Material	尺寸 Size (w×d×h)
SP-20	铝+木 Aluminum+Wood	250 x 428 x 50 mm

颜色：B系皮革
Color: B Series Leather



百宝格 DIVIDING BOX

产品型号 Item No.	基材 Material	尺寸 Size (w×d×h)
SP-21	铝+木 Aluminum+Wood	250 x 428 x 50 mm

颜色：B系皮革
Color: B Series Leather



活动分隔盒 RING DIVIDER BOX

产品型号 Item No.	基材 Material	尺寸 Size (w×d×h)
SP-26	铝合金 Aluminum-Alky	85 x 428 x 50 mm

颜色：外圈：BZ-17 内饰：B-19
Color: Exterior: BZ-17 Interior B-19



可伸缩饰品盒 EXPANDABLE JEWELRY BOX

产品型号 Item No.	基材 Material	尺寸 Size (w×d×h)
SP-27	全木 Wood	(564-964) x 500 x 60 mm

颜色：环保PVC
Color: Environmentally Friendly PVC



洗衣篮 LAUNDRY BASKET

产品型号 Item No.	基材 Material	尺寸 Size (w×d×h)
SP-28	铝+木 Aluminum+Wood	400 x 400 x 500 mm

颜色：常用颜色B系列
Color: Commonly used color B series



皮革首饰盒 JEWELRY BOX

产品型号 Item No.	基材 Material	尺寸 Size (w×d×h)
SP-29	木 Wood	751 x 440 x 70 mm

STORAGE

定制收纳类

颜色：常用颜色B系列
Color: Commonly used color B series



皮质收纳箱 LEATHER STORAGE BOX

产品型号 Item No.	基材 Material	尺寸 Size (w×d×h)
SN-1	/	300 x 400 x 200 mm

颜色：常用颜色B系列
Color: Commonly used color B series



带盖收纳箱 STORAGE BOX WITH LID (ORTHOMORPHIC)

产品型号 Item No.	基材 Material	尺寸 Size (w×d×h)
SN-7	/	270 x 300 x 320 mm

颜色：常用颜色B系列
Color: Commonly used color B series



带盖收纳盒 STORAGE BOX WITH LID-TRONDHEIM SERIES

产品型号 Item No.	基材 Material	尺寸 Size (w×d×h)
SN-9	5厘板 5 Li Board	550 x 330 x 200 mm

颜色：常用颜色B系列
Color: Commonly used color B series



编织收纳篮 WOVEN STORAGE BASKET

产品型号 Item No.	基材 Material	尺寸 Size (w×d×h)
AC-1	/	300 x 300 x 400 mm

颜色：常用颜色B系列
Color: Commonly used color B series



单面软皮垫 SINGLE SIDED SOFT LEATHER PAD

产品型号 Item No.	基材 Material	尺寸 Size (w×d×h)
C-1	/	/

颜色：常用颜色B系列
Color: Commonly used color B series



双面软皮垫 DOUBLE SIDED SOFT LEATHER PAD

产品型号 Item No.	基材 Material	尺寸 Size (w×d×h)
C-6	/	/

颜色：常用颜色B系列
Color: Commonly used color B series



铝合金皮垫 ALUMINUM ALLOY LEATHER PAD

产品型号 Item No.	基材 Material	尺寸 Size (w×d×h)
C-7	铝板 Aluminum plate	/



首创皮铝艺术结合

审美的边界，影响艺术的造诣，技术的革新，决定生活的形态，
提升家居的格调。

The boundary of aesthetics affects the attainments of art,
The innovation of technology determines the form of life,
enhance the style of home.

FRAME CABINET TYPE

套格柜体类



玻璃岛台 GLASS KITCHEN ISLAND

产品型号 Item No.	基材 Material	尺寸 Size (wxd+h)
TG10	铝合金 Aluminum Alloy	1670 x 850 x 930 mm

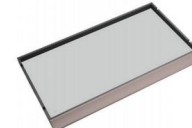


酒柜 WINE CABINET

产品型号 Item No.	基材 Material	尺寸 Size (wxd+h)
TG11	铝合金 Aluminum Alloy	910 x 500 x 1730 mm

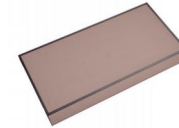
FRAME CABINET TYPE

套格柜体类



玻璃层板带灯光 LEATHER BOARD WITH LIGHT

产品型号 Item No.	基材 Material	尺寸 Size (wxd+h)
TL-2-06	铝合金 Aluminum Alloy	564 x 492 x 36 mm
TL-2-07		664 x 492 x 36 mm
TL-2-08		764 x 492 x 36 mm
TL-2-09		864 x 492 x 36 mm
TL-2-10		964 x 492 x 36 mm



皮革层板带灯光 LEATHER BOARD WITH LIGHT

产品型号 Item No.	基材 Material	尺寸 Size (wxd+h)
TL-3-06	铝合金 Aluminum Alloy	564 x 492 x 36 mm
TL-3-07		664 x 492 x 36 mm
TL-3-08		764 x 492 x 36 mm
TL-3-09		864 x 492 x 36 mm
TL-3-10		964 x 492 x 36 mm



玻璃层板 + 挂衣杆 GLASS SHELF + CLOTHING ROD

产品型号 Item No.	基材 Material	尺寸 Size (wxd+h)
/	铝合金 Aluminum Alloy	适配衣杆: KY-2



玻璃层板加挂衣杆 GLASS SHELF WITH CLOTHING ROD

产品型号 Item No.	基材 Material	尺寸 Size (wxd+h)
/	铝合金 Aluminum Alloy	适配衣杆: KY-5, KY-6



玻璃层板 GLASS SHELF

产品型号 Item No.	基材 Material	尺寸 Size (wxd+h)
TL-22-06	铝合金 Aluminum Alloy	564 x 492 x 36 mm
TL-22-07		664 x 492 x 36 mm
TL-22-08		764 x 492 x 36 mm
TL-22-09		864 x 492 x 36 mm
TL-22-10		964 x 492 x 36 mm



层板前端型材 SHELF FRONT TRIM

产品型号 Item No.	基材 Material	尺寸 Size (wxd+h)
KY-8	铝合金 Aluminum Alloy	单个尺寸订制



ACCESSORIES
配件系列



酒杯杆 WINE GLASS POLE

产品型号 Item No.	基材 Material	尺寸 Size (w*d*H)
GY-5	铝条 Aluminum Strip	<1000 mm



酒架 WINE RACK

产品型号 Item No.	基材 Material	尺寸 Size (w*d*H)
C-22-07	铝合金 Aluminum Alloy	664 x 210 x 190 mm
C-22-08		764 x 210 x 190 mm
C-22-09		864 x 210 x 190 mm
C-22-10		964 x 210 x 190 mm



皮酒瓶托 LEATHER WINE BOTTLE HOLDER

产品型号 Item No.	基材 Material	尺寸 Size (w*d*H)
C-24	铝合金 Aluminum Alloy	90 x 35 x 350 mm



酒架 TRONDHEIM SERIES-WINE RACK

产品型号 Item No.	基材 Material	尺寸 Size (w*d*H)
TL-4-06	铝合金 Aluminum Alloy	564 x 492 x 36 mm
TL-4-07		664 x 492 x 36 mm
TL-4-08		764 x 492 x 36 mm
TL-4-09		864 x 492 x 36 mm
TL-4-10		964 x 492 x 36 mm



酒杯架 WINE GLASS RACK

产品型号 Item No.	基材 Material	尺寸 Size
C-11-07	钢板 Steel Plate	560 (600H)
C-11-08		660 (700H)
C-11-09		760 (800H)
C-11-10		860 (900H)



酒架 WINE RACK

产品型号 Item No.	基材 Material	尺寸 Size (w*d*H)
C-23-07	铝合金 Aluminum Alloy	664 x 210 x 190 mm
C-23-08		764 x 210 x 190 mm
C-23-09		864 x 210 x 190 mm
C-23-10		964 x 210 x 190 mm



酒瓶托 WINE BOTTLE HOLDER

产品型号 Item No.	基材 Material	尺寸 Size (w*d*H)
C-25	铝合金 Aluminum Alloy	90 x 35 x 350 mm



酒袋 WINESKIN

产品型号 Item No.	基材 Material	尺寸 Size (w*d*H)
C-14	/	/



酒袋支撑杆 WINE BAG TUBE

产品型号 Item No.	基材 Material	尺寸 Size (w*d*H)
C-15	铝合金 Aluminum Alloy	/

FRAME CABINET TYPE

套格柜体类

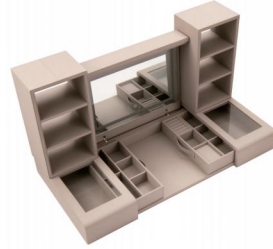


颜色: B系皮革
备注: 密码抽内饰为皮革/绒布

Color: B Series Leather
Note: The interior of the password draw is made of leather / velvet

套盒(含密码宝格+密码抽) SET BOX (INCLUDING 1 SET OF BABAOGE + PASSWORD DRAW)

产品型号 Item No.	基材 Material	尺寸 Size (w×d×h)
TG3-5	全木 Whole Wood	528 x 480 x 350 mm
TG3-6		612 x 480 x 350 mm
TG3-7		712 x 480 x 350 mm
TG3-8		812 x 480 x 350 mm
TG3-9		912 x 480 x 350 mm
TG3-10		1012 x 480 x 350 mm



上翻梳妆台 DRESSER MULTILAYER BOARD + GLASS + ELECTRONIC DRESSING MIRROR

产品型号 Item No.	基材 Material	尺寸 Size (w×d×h)
TG7	/	1100 x 500 x 120 mm



床头柜 NIGHTSTAND

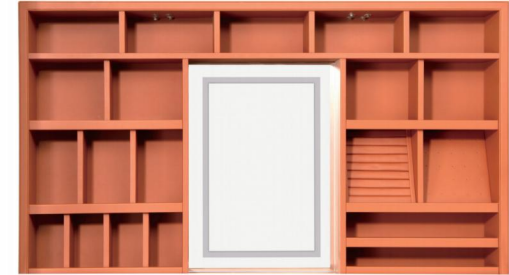
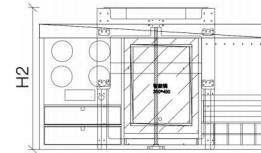
产品型号 Item No.	基材 Material	尺寸 Size (w×d×h)
TG9	/	528 x 480 x 500 mm

FRAME CABINET TYPE

套格柜体类



*搭配BJ670背装下降电机670

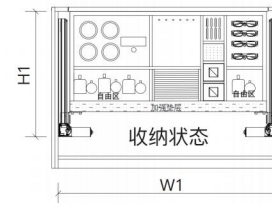


下降首饰柜 ELEVATING CABINET BODY (INCLUDING MIRROR)

产品型号 Item No.	基材 Material	尺寸 Size (w×d×h)
XJSS	中纤板 MDF	专属定制, 需提供布局图纸



*搭配CZSDJ650侧装双电机650



上升首饰柜 LIFTING CABINET (INCLUDING WATCH SHAKER)

产品型号 Item No.	基材 Material	尺寸 Size (w×d×h)
DTSS	中纤板 MDF	专属定制, 需提供布局图纸

FRAME CABINET TYPE
 套格柜体类



颜色: B系皮革
 Color: B Series Leather

双层套格 DOUBLE-LAYER TRAY

产品型号 Item No.	基材 Material	尺寸 Size (w×d×h)
TG2-06	全木 Wood	560 x 350 x 300 mm
TG2-07		660 x 350 x 300 mm
TG2-08		760 x 350 x 300 mm
TG2-09		860 x 350 x 300 mm
TG2-10		960 x 350 x 300 mm



颜色: B系皮革
 Color: B Series Leather

摇表器 (含一层皮抽) WATCH SHAKER (WITH 1-LEATHER DRAWER)

产品型号 Item No.	基材 Material	尺寸 Size (w×d×h)
KY-4-06 A	颗粒板 Particle Board	560 x 350 x 360 mm
KY-4-07 A		660 x 350 x 360 mm
KY-4-08 A		760 x 350 x 360 mm
KY-4-09 A		860 x 350 x 360 mm
KY-4-10 A		960 x 350 x 360 mm



颜色: B系皮革
 Color: B Series Leather

摇表器 (含两层皮抽) WATCH SHAKER (WITH 2-LEATHER DRAWER)

产品型号 Item No.	基材 Material	尺寸 Size (w×d×h)
KY-4-06 B	颗粒板 Particle Board	560 x 350 x 500 mm
KY-4-07 B		660 x 350 x 500 mm
KY-4-08 B		760 x 350 x 500 mm
KY-4-09 B		860 x 350 x 500 mm
KY-4-10 B		960 x 350 x 500 mm



颜色: B系皮革
 Color: B Series Leather

单层摇表器 WATCH SHAKER

产品型号 Item No.	基材 Material	尺寸 Size (w×d×h)
KY-4-06	颗粒板 Particle Board	560 x 350 x 230 mm
KY-4-07		660 x 350 x 230 mm
KY-4-08		760 x 350 x 230 mm
KY-4-09		860 x 350 x 230 mm
KY-4-10		960 x 350 x 230 mm

FRAME CABINET TYPE
 套格柜体类



备注: 皮革内饰
 Color: Leather interior

密码箱体 CODED LOCK CASE

产品型号 Item No.	基材 Material	尺寸 Size (w×d×h)
TG6-400	碳钢 Carbon Steel	400 x 400 x 150 mm
TG6-464		464 x 400 x 150 mm
TG6-480		480 x 400 x 150 mm
TG6-564		564 x 400 x 150 mm
TG6-580		580 x 400 x 150 mm
TG6-664		664 x 400 x 150 mm
TG6-724		724 x 400 x 150 mm
TG6-764		764 x 425 x 150 mm
TG6-824		824 x 400 x 150 mm
TG6-864		864 x 400 x 150 mm
TG6-964		964 x 400 x 150 mm



备注: 皮革内饰加皮革抽面
 Color: Leather interior with leather veneer

密码箱体 CODED LOCK CASE

产品型号 Item No.	基材 Material	尺寸 Size (w×d×h)
TG5-400	碳钢 Carbon Steel	400 x 425 x 150 mm
TG5-464		464 x 425 x 150 mm
TG5-480		480 x 425 x 150 mm
TG5-564		564 x 425 x 150 mm
TG5-580		580 x 425 x 150 mm
TG5-664		664 x 425 x 150 mm
TG5-724		724 x 425 x 150 mm
TG5-764		764 x 425 x 150 mm
TG5-824		824 x 425 x 150 mm
TG5-864		864 x 425 x 150 mm
TG5-964		964 x 425 x 150 mm

意式皮抽

ITALIAN LEATHER DRAWER

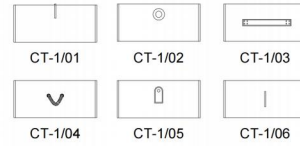
产品信息

- * 产品型号: CT-1
- * 产品材质: 铝
- * 常规尺寸: 按客户要求尺寸单个定制
- * 颜色: 常用颜色 B系列

Product information

- * Model: CT-1
- * Material: Aluminum
- * Size: Customized individually according to the customer's required size
- * Color: Commonly used color B series

拉手款式



意式皮抽

ITALIAN LEATHER DRAWER

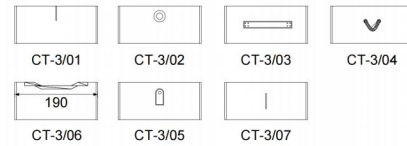
产品信息

- * 产品型号: CT-2
- * 产品材质: 防水木
- * 常规尺寸: 按客户要求尺寸单个定制
- * 颜色: 常用颜色 B系列

Product information

- * Model: CT-2
- * Material: Waterproof Wood
- * Size: Customized individually according to the customer's required size
- * Color: Commonly used color B series

拉手款式



意式皮抽

ITALIAN LEATHER DRAWER

产品信息

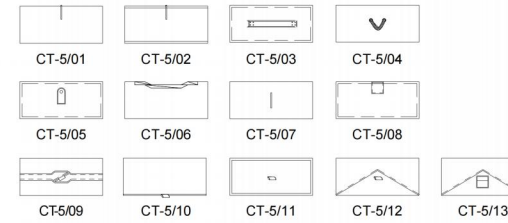
- * 产品型号: CT-3
- * 产品材质: 中纤板
- * 常规尺寸: 按客户要求尺寸单个定制
- * 颜色: 常用颜色 B系列

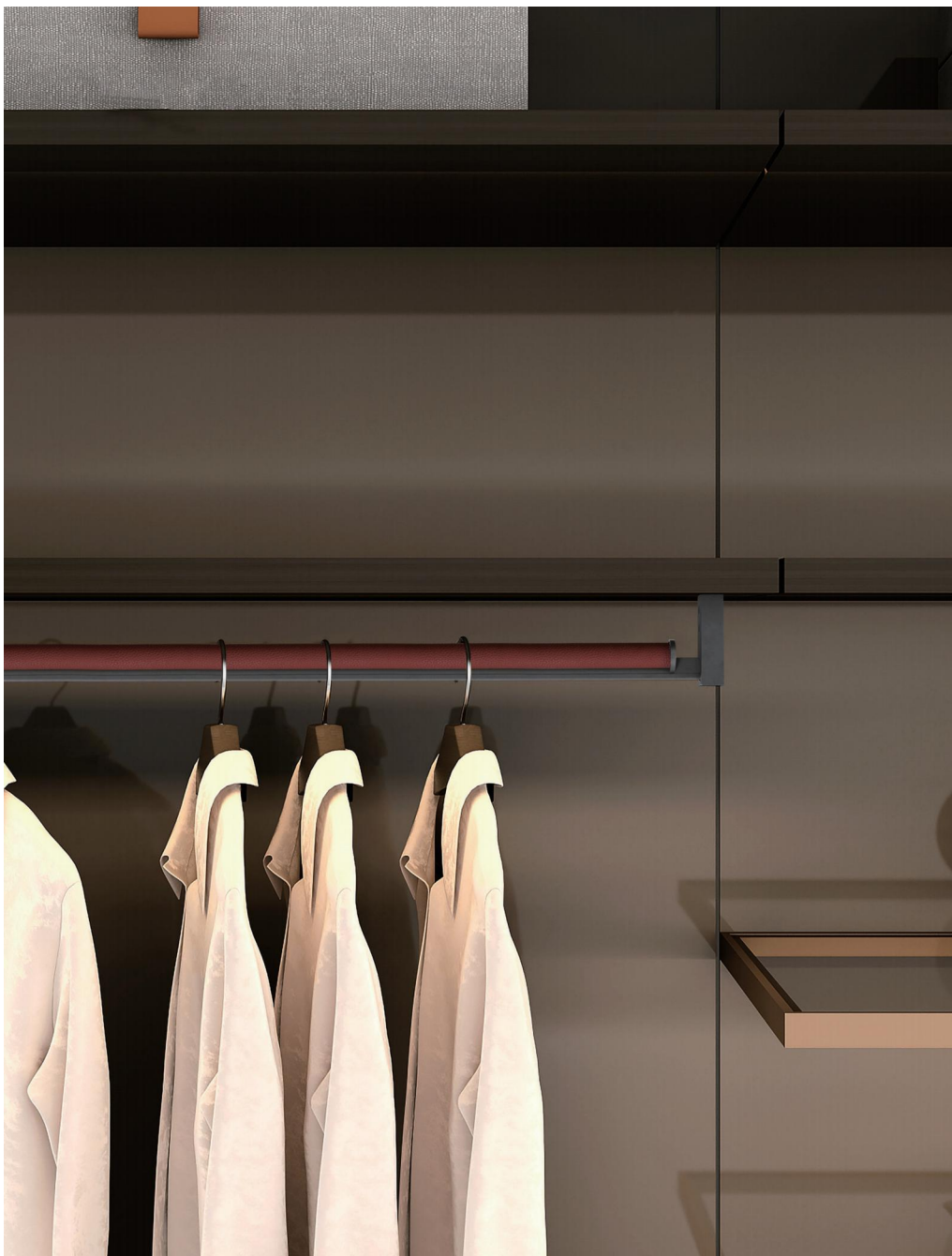
Product information

- * Model: CT-3
- * Material: MDF
- * Size: Customized individually according to the customer's required size
- * Color: Commonly used color B series



拉手款式





HANGER

衣杆类

专为知性而生的美

创新地将衣钩、衣托、衣杆与皮艺结合，
将奢华气质植入衣帽间，符合高端衣物的品味。

It innovatively integrates coat hooks, garment supports,
and hanging rods with leather craftsmanship,
infusing a luxurious vibe into the cloakroom and perfectly matching
the taste of high-end clothing.

侧装顶装衣杆 (方形)

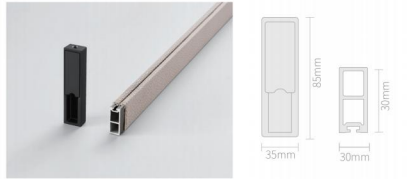
SIDE MOUNTED TOP MOUNTED CLOTHES POLE (SQUARE)

产品信息

- * 产品型号: KY-1-06/KY-1-07/KY-1-08/KY-1-09/KY-1-10/KY-1-12
- * 产品材质: 铝合金
- * 常规尺寸: 500/600/700/800/900/1100 mm
- * 可定制皮革颜色

Product information

- * Model: KY-1-06/KY-1-07/KY-1-08/KY-1-09/KY-1-10/KY-1-12
- * Material: Aluminum Alloy
- * Size: 500/600/700/800/900/1100 mm
- * Customizable Leather colors



顶装衣杆 (方形)

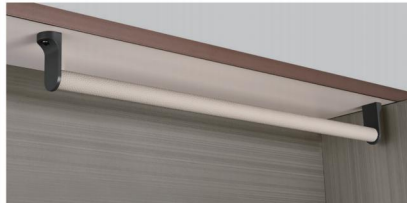
TOP MOUNTED CLOTHES POLE (SQUARE)

产品信息

- * 产品型号: KY-2-06/KY-2-07/KY-2-08//KY-2-09/KY-2-10/KY-2-12
- * 产品材质: 铝合金
- * 常规尺寸: 500/600/700/800/900/1100 mm
- * 可定制皮革颜色

Product information

- * Model: KY-2-06/KY-2-07/KY-2-08/KY-2-09/KY-2-10/KY-2-12
- * Material: Aluminum Alloy
- * Size: 500/600/700/800/900/1100 mm
- * Customizable Leather colors



顶装衣杆 (圆形)

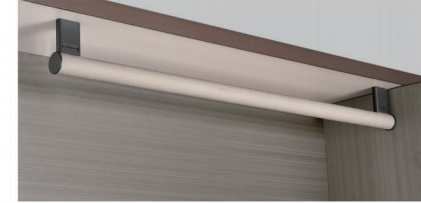
TOP MOUNTED CLOTHES POLE (CIRCULAR)

产品信息

- * 产品型号: KY-3-06/KY-3-07/KY-3-08/KY-3-09/KY-3-10/KY-3-12
- * 产品材质: 铝合金
- * 常规尺寸: 500/600/700/800/900/1100 mm
- * 可定制皮革颜色

Product information

- * Model: KY-3-06/KY-3-07/KY-3-08/KY-3-09/KY-3-10/KY-3-12
- * Material: Aluminum Alloy
- * Size: 500/600/700/800/900/1100 mm
- * Customizable Leather colors



侧装顶装衣杆 (圆形)

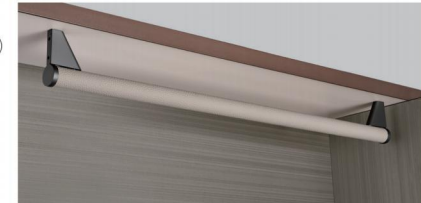
SIDE MOUNTED TOP MOUNTED CLOTHES POLE (CIRCULAR)

产品信息

- * 产品型号: KY-4-06/KY-4-07/KY-4-08/KY-4-09/KY-4-10/KY-4-12
- * 产品材质: 铝合金
- * 常规尺寸: 500/600/700/800/900/1100 mm
- * 可定制皮革颜色

Product information

- * Model: KY-4-06/KY-4-07/KY-4-08/KY-4-09/KY-4-10/KY-4-12
- * Material: Aluminum Alloy
- * Size: 500/600/700/800/900/1100 mm
- * Customizable Leather colors



顶装衣杆 (方形)

TOP MOUNTED CLOTHES POLE (SQUARE)

产品信息

- * 产品型号: KY-5-06/KY-5-07/KY-5-08/KY-5-09/KY-5-10/KY-5-12
- * 产品材质: 铝合金
- * 常规尺寸: 500/600/700/800/900/1100 mm
- * 可定制皮革颜色

Product information

- * Model: KY-5-06/KY-5-07/KY-5-08/KY-5-09/KY-5-10/KY-5-12
- * Material: Aluminum Alloy
- * Size: 500/600/700/800/900/1100 mm
- * Customizable Leather colors



顶装衣杆 (圆形)

TOP MOUNTED CLOTHES POLE (CIRCULAR)

产品信息

- * 产品型号: KY-6-06/KY-6-07/KY-6-08/KY-6-09/KY-6-10/KY-6-12
- * 产品材质: 铝合金
- * 常规尺寸: 500/600/700/800/900/1100 mm
- * 可定制皮革颜色

Product information

- * Model: KY-6-06/KY-6-07/KY-6-08/KY-6-09/KY-6-10/KY-6-12
- * Material: Aluminum Alloy
- * Size: 500/600/700/800/900/1100 mm
- * Customizable Leather colors



侧装顶装衣杆 (三角形)

SIDE MOUNTED TOP MOUNTED CLOTHES POLE (TRIANGLE)

产品信息

- * 产品型号: KY-7-06/KY-7-07/KY-7-08/KY-7-09/KY-7-10/KY-7-12
- * 产品材质: 铝合金
- * 常规尺寸: 500/600/700/800/900/1100 mm
- * 可定制皮革颜色

Product information

- * Model: KY-7-06/KY-7-07/KY-7-08/KY-7-09/KY-7-10/KY-7-12
- * Material: Aluminum Alloy
- * Size: 500/600/700/800/900/1100 mm
- * Customizable Leather colors



侧装顶装衣杆 (蛋形)

SIDE MOUNTED TOP MOUNTED CLOTHES POLE (OVOID)

产品信息

- * 产品型号: KY-9-06/KY-9-07/KY-9-08/KY-9-09/KY-9-10/KY-9-12
- * 产品材质: 铝合金
- * 常规尺寸: 500/600/700/800/900/1100 mm
- * 可定制皮革颜色

Product information

- * Model: KY-9-06/KY-9-07/KY-9-08/KY-9-09/KY-9-10/KY-9-12
- * Material: Aluminum Alloy
- * Size: 500/600/700/800/900/1100 mm
- * Customizable Leather colors



侧装顶装衣杆 (圆形)

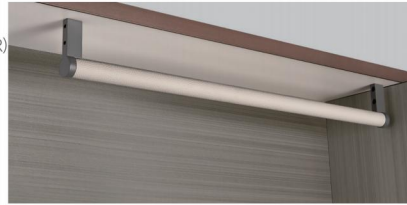
SIDE MOUNTED TOP MOUNTED CLOTHES POLE (CIRCULAR)

产品信息

- * 产品型号: KY-10-06/KY-10-07/KY-10-08/KY-10-09/KY-10-10/KY-10-12
- * 产品材质: 铝合金
- * 常规尺寸: 500/600/700/800/900/1100 mm
- * 可定制皮革颜色

Product information

- * Model: KY-10-06/KY-10-07/KY-10-08/KY-10-09/KY-10-10/KY-10-12
- * Material: Aluminum Alloy
- * Size: 500/600/700/800/900/1100 mm
- * Customizable Leather colors



侧装顶装衣杆 (圆形)

SIDE MOUNTED TOP MOUNTED CLOTHES POLE (CIRCULAR)

产品信息

- * 产品型号: KY-11-06/KY-11-07/KY-11-08/KY-11-09/KY-11-10/KY-11-12
- * 产品材质: 铝合金
- * 常规尺寸: 500/600/700/800/900/1100 mm
- * 可定制皮革颜色

Product information

- * Model: KY-11-06/KY-11-07/KY-11-08/KY-11-09/KY-11-10/KY-11-12
- * Material: Aluminum Alloy
- * Size: 500/600/700/800/900/1100 mm
- * Customizable Leather colors



顶装衣杆 (椭圆形)

TOP MOUNTED CLOTHES POLE (OVAL)

产品信息

- * 产品型号: KY-12-06/KY-12-07/KY-12-08/KY-12-09/KY-12-10/KY-12-12
- * 产品材质: 铝合金
- * 常规尺寸: 500/600/700/800/900/1100 mm
- * 可定制皮革颜色

Product information

- * Model: KY-12-06/KY-12-07/KY-12-08/KY-12-09/KY-12-10/KY-12-12
- * Material: Aluminum Alloy
- * Size: 500/600/700/800/900/1100 mm
- * Customizable Leather colors



顶装衣杆 (转角)

TOP MOUNTED CLOTHES POLE (CORNER)

产品信息

- * 产品型号: KY-13-06/KY-13-07/KY-13-08/KY-13-09/KY-13-10/KY-13-12
- * 产品材质: 铝合金
- * 常规尺寸: 500/600/700/800/900/1100 mm
- * 可定制皮革颜色

Product information

- * Model: KY-13-06/KY-13-07/KY-13-08/KY-13-09/KY-13-10/KY-13-12
- * Material: Aluminum Alloy
- * Size: 500/600/700/800/900/1100 mm
- * Customizable Leather colors





HANGER

衣杆类



衣架 (男士) HANGER (MAN)

产品型号 Item No.	基材 Material	尺寸 Size (w*d*H)
GY-6	实木 Solid Wood	单一尺寸 Single Size



衣架 (女士) HANGER (WOMAN)

产品型号 Item No.	基材 Material	尺寸 Size (w*d*H)
GY-7	实木 Solid Wood	单一尺寸 Single Size



裤架 TROUSER HANGER

产品型号 Item No.	基材 Material	尺寸 Size (w*d*H)
GY-8	实木 Solid Wood	单一尺寸 Single Size



裤架 (圆形) TROUSER HANGER (CIRCULAR)

产品型号 Item No.	基材 Material	尺寸 Size (w*d*H)
GY-8A	实木 Solid Wood	单一尺寸 Single Size



丝巾架 SCARF HOLDER

产品型号 Item No.	基材 Material	尺寸 Size (w*d*H)
X-5	胡桃木 Walnut wood	∅20 x 135 x 980 mm



衣杆 CLOTHING POLE

产品型号 Item No.	基材 Material	尺寸 Size (w*d*H)
X-6	胡桃木 Walnut wood	∅20 x 65 x 980 mm



LEATHER DOOR

高定衣帽皮革门

颜色: B系列全套色卡

Color: The complete set of Bseries color cards



皮封边雕刻柜门 LEATHER-EDGED CARVED CABINET DOOR

产品型号 Item No.	基材 Material	尺寸 Size (w×d×h)
BC-2	OSB	高度2750以下

颜色: B系列全套色卡

Color: The complete set of Bseries color cards

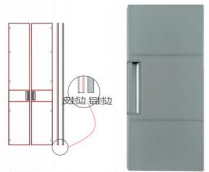


铝封边雕刻柜门 ALUMINUM-EDGED CARVED CABINET DOOR

产品型号 Item No.	基材 Material	尺寸 Size (w×d×h)
BC-2 A	OSB	高度2750以下

颜色: B系列全套色卡

Color: The complete set of Bseries color cards

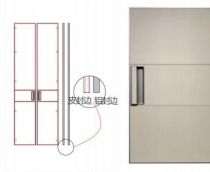


皮封边平面柜门 LEATHER-EDGED FLAT CABINET DOOR

产品型号 Item No.	基材 Material	尺寸 Size (w×d×h)
BC-6	OSB	高度2750以下

颜色: B系列全套色卡

Color: The complete set of Bseries color cards



铝封边平面柜门 ALUMINUM-EDGED FLAT CABINET DOOR

产品型号 Item No.	基材 Material	尺寸 Size (w×d×h)
BC-7	OSB	高度2750以下

颜色: 水性皮革B19

备注: 玻璃皮革门板A款 (5厘玻璃有灰玻、白玻、茶玻)

Color: Water-based leather B19

Note: Glass leather door panel Model A (5mm glass includes grey glass, white glass, and tea glass)



玻璃皮革门板 ALUMINUM-FRAMED GLASS DOOR

产品型号 Item No.	基材 Material	尺寸 Size (w×d×h)
BC-11	25厚铝材 5MM钢化玻璃	3米以下

颜色: 水性皮革B19

Color: Water-based leather B19



皮革门板 ALUMINUM-FRAMED LEATHER DOOR

产品型号 Item No.	基材 Material	尺寸 Size (w×d×h)
BC-15	25厚铝材 OSB	3米以下

CABINET DOOR SLIDING TYPE

柜门抽面类

弧面柜门 RADUSED DOOR PANEL

产品型号 Item No.	基材 Material	尺寸 Size (w×d×h)
HBC-6	/	2800以下



弧面见光板 RADUSED KICKBOARD

产品型号 Item No.	基材 Material	尺寸 Size (w×d×h)
HBC-8	/	2800以下



皮革层板/皮边抽面 LEATHER-SHELF / LEATHER-EDGED DRAWER FRONT

产品型号 Item No.	基材 Material	尺寸 Size (w×d×h)
CB-1	/	2800以下



铝边抽面 (塑料护角) ALUMINUM-EDGED DRAWER FRONT (WITH PLASTIC CORNER GUARDS)

产品型号 Item No.	基材 Material	尺寸 Size (w×d×h)
CM-7	/	/



铝边抽面 (45°拼缝) ALUMINUM-EDGED DRAWER FRONT (45° MITERED JOINTS)

产品型号 Item No.	基材 Material	尺寸 Size (w×d×h)
CM-7	/	/



CUPBOARD DOOR HANDLE

柜门拉手类

4.8米永不变形的衣柜门



为家点睛优雅

精美柜门皮拉手系统，优美流畅的线条以及和谐平衡的比例，完美的演绎了皮艺时尚独特的高品质和极奢的气质。

Exquisite cabinet door leather handle system, beautiful and smooth lines and harmonious and balanced proportion, perfect interpretation of the leather fashion unique high quality and extremely extravagant temperament.



21#拉手
21#handle



21#拉手
21#handle



22#拉手
22#handle



27#拉手
27#handle



24#拉手
24#handle



25#拉手
25#handle



26#拉手
26#handle



27#拉手
27#handle



28#拉手
28#handle



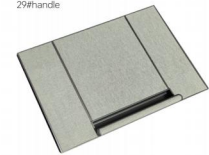
29#拉手
29#handle



30#拉手
30#handle



31#拉手
31#handle



33#拉手
33#handle



34#拉手
34#handle

LEATHER DOOR HANDLE

高定农棚皮革长拉手



LD786-11#

长拉手 LONG HANDLE

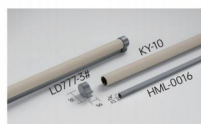
产品型号 Item No.	基材 Material	尺寸 Size (w*d*H)
LD786-11#	铝锌合金 Aluminium-Zinc Alloy	单个尺寸订制



LD785-8#

长拉手 LONG HANDLE

产品型号 Item No.	基材 Material	尺寸 Size (w*d*H)
LD785-8#	铝锌合金 Aluminium-Zinc Alloy	单个尺寸订制



LD-777-3# LD-777-3#

长拉手 LONG HANDLE

产品型号 Item No.	基材 Material	尺寸 Size (w*d*H)
LD777-3#	铝锌合金 Aluminium-Zinc Alloy	单个尺寸订制



LD784-9#

长拉手 LONG HANDLE

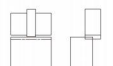
产品型号 Item No.	基材 Material	尺寸 Size (w*d*H)
LD784-9#	铝锌合金 Aluminium-Zinc Alloy	单个尺寸订制



LD775-1#

长拉手 LONG HANDLE

产品型号 Item No.	基材 Material	尺寸 Size (w*d*H)
LD775-1#	铝锌合金 Aluminium-Zinc Alloy	单个尺寸订制



LD776-2# LD785-10#

长拉手 LONG HANDLE

产品型号 Item No.	基材 Material	尺寸 Size (w*d*H)
LD776-2#	铝锌合金 Aluminium-Zinc Alloy	单个尺寸订制
LD785-10#		



LD778-4#

长拉手 LONG HANDLE

产品型号 Item No.	基材 Material	尺寸 Size (w*d*H)
LD778-4#	铝锌合金 Aluminium-Zinc Alloy	单个尺寸订制



LD782-7#

长拉手 LONG HANDLE

产品型号 Item No.	基材 Material	尺寸 Size (w*d*H)
LD782-7#	铝锌合金 Aluminium-Zinc Alloy	单个尺寸订制

LEATHER DOOR HANDLE

高定农棚皮革长拉手



皮革包覆立柱 LEATHER CLAD COLUMN

产品型号 Item No.	基材 Material	尺寸 Size (w*d*H)
KY32#	铝锌合金 Aluminium-Zinc Alloy	单个尺寸订制
KY33#		



通用手柄管 UNIVERSAL HANDLE TUBE

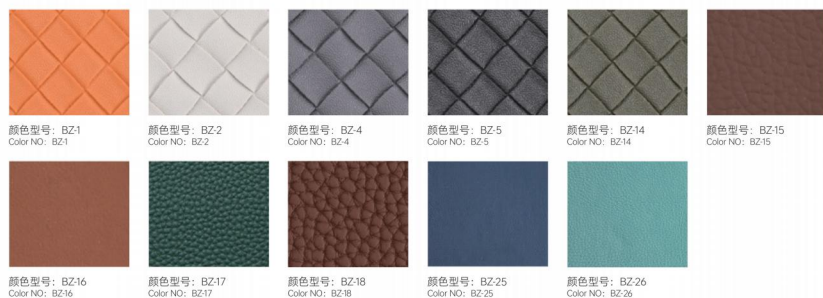
产品型号 Item No.	基材 Material	尺寸 Size (w*d*H)
KY10#	铝锌合金 Aluminium-Zinc Alloy	单个尺寸订制

色卡

B系列色卡
B series color card



BZ系列色卡
BZ series color card



A系列色卡
A series color card

备注: 只用于门板
Remarks: It is only used for door panels

